

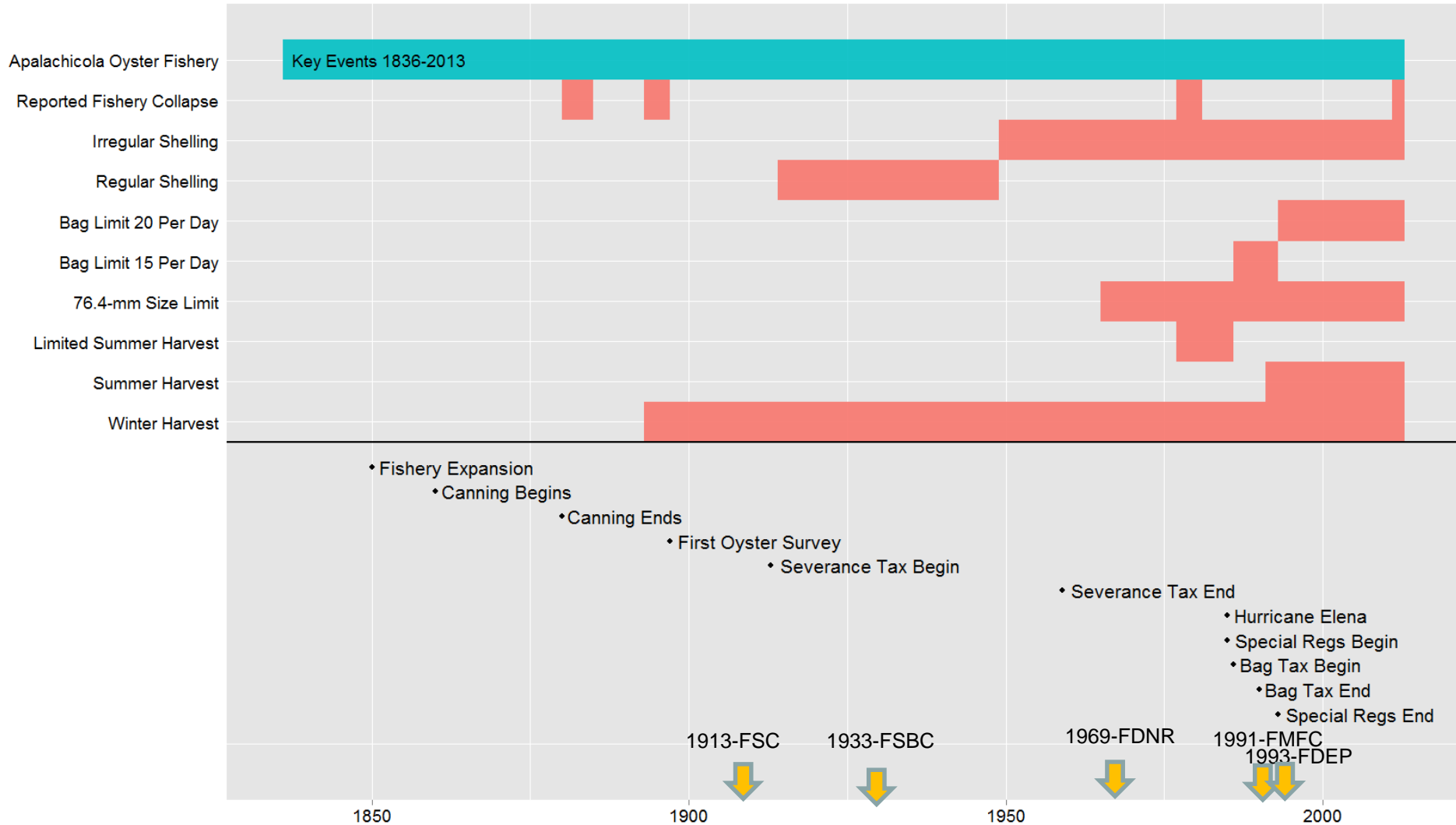
# Oyster Fishery & Aquaculture

Regulatory Framework / Harvest Statistics





# Apalachicola Bay Oyster Fishery: Timeline of Key Events & Management Actions 1836-2013



# Florida Fish & Wildlife Commission



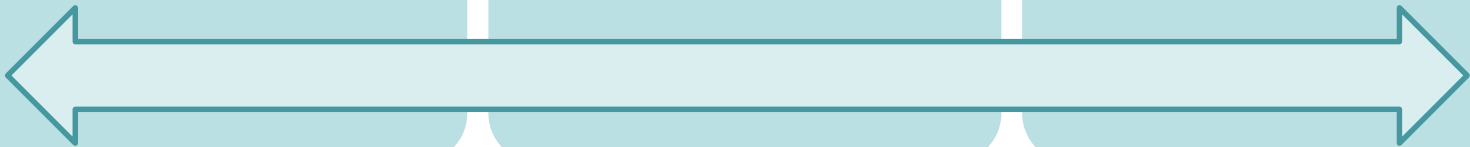
Sets season,  
size & bag  
limits



Enforces oyster  
regulations



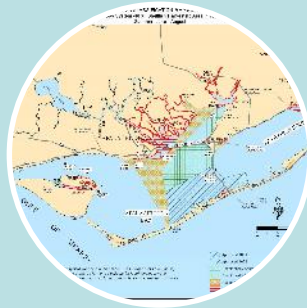
Issues shellfish  
endorsement  
for commercial  
harvest



# Division of Aquaculture



Aquaculture  
Certificate of  
Registration and  
Best  
Management  
Practices



Shellfish  
Harvesting Area  
Classification



Sovereignty  
Submerged  
Land Leasing  
(700 leases,  
2,000 acres)



Shellfish  
Processing  
Facility  
Certification



# Sales of Certified Oysters

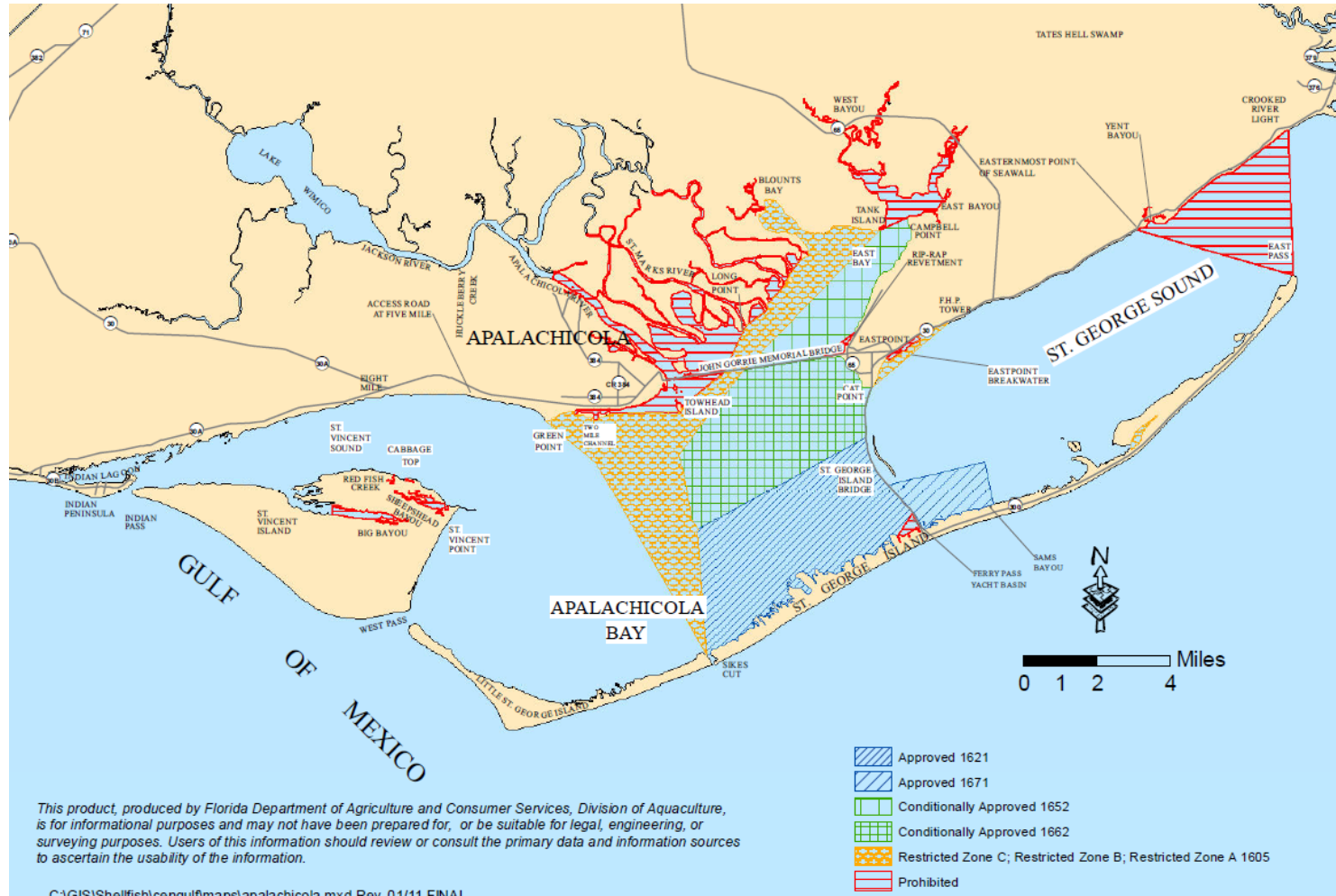
all commercial harvest wild or AQ must be sold directly to a certified processor

	2016		2017		2018		2019 to date	
	Shell Lbs	No. Shellfish	Shell Lbs	No. Shellfish	Shell Lbs	No. Shellfish	Shell Lbs	No. Shellfish
Aquaculture	1.4 million	5.9 million	482.5 K	2.5 million	808 K	4.2 million	809 K	4.2 million
Wild	8.3 million	43.2 million	7.1 million	37 million	4.4 million	22.7 million	2.4 million	12.3 million



# Apalachicola Bay System: Summer Harvesting Area

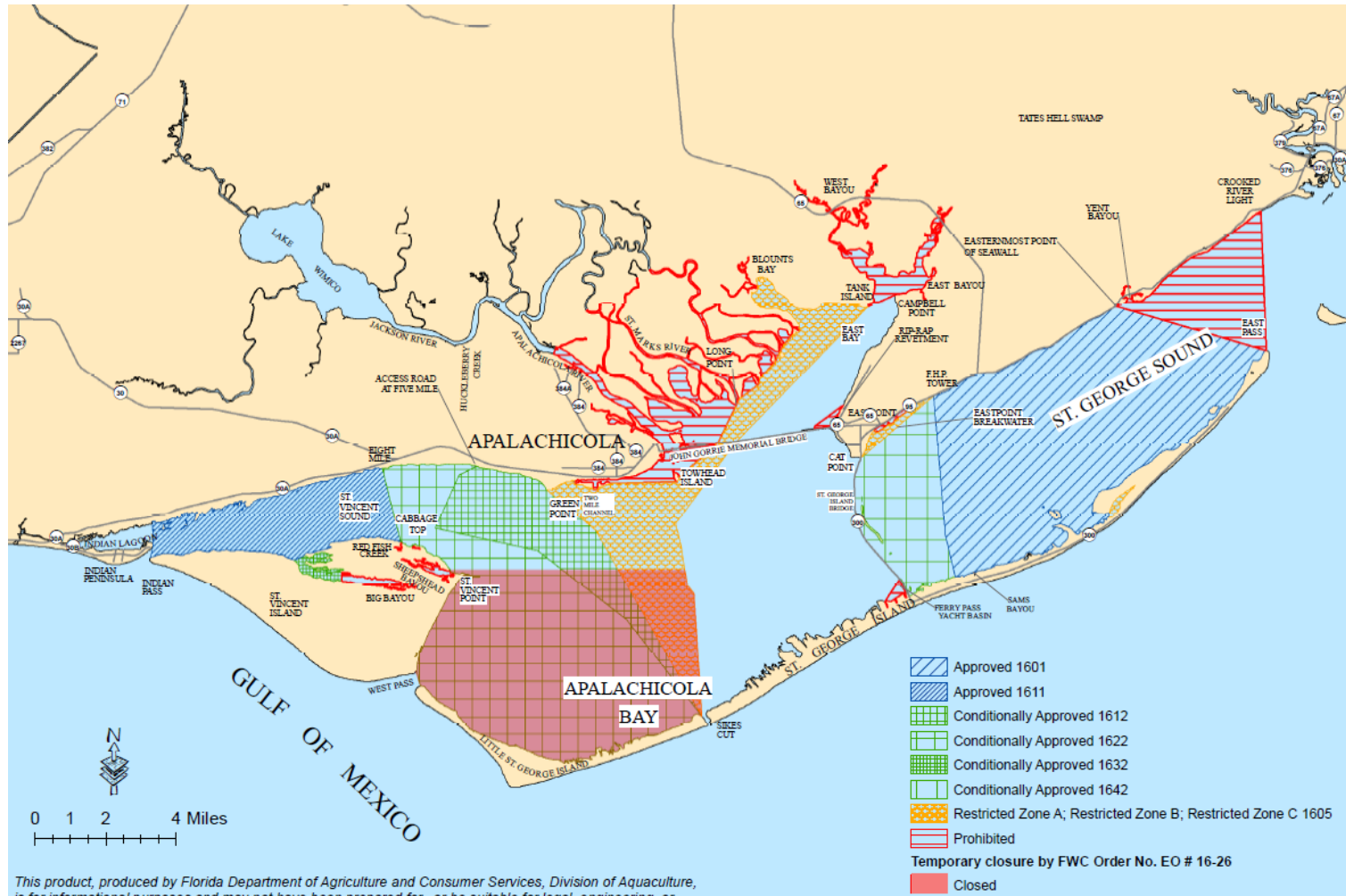
## June 1 – August 31



- Approved** - open to shellfish harvesting, closed temporarily for red tides, hurricanes and sewage spills.
- Conditionally Approved** – closed periodically to harvest pollution events, such as rainfall or increased river flow.
- Restricted** - open to relay (oyster transfer from Restricted to Approved area); controlled purification by special permit
- Conditionally Restricted** – Temporary suspension of relay & controlled purification based on pollution events
- Prohibited** - due to actual or potential pollution.



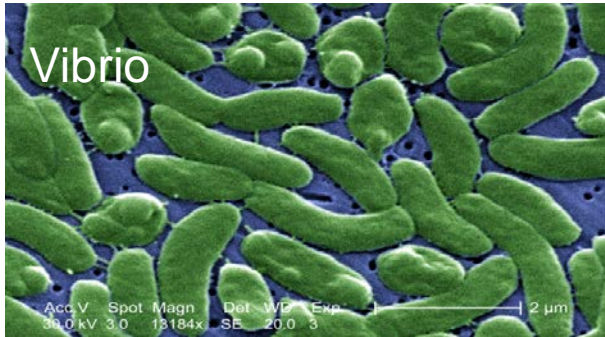
# Apalachicola Bay System: Winter Harvesting Area September 1 – May 31



- Approved** - open to shellfish harvesting, closed temporarily for red tides, hurricanes and sewage spills.
- Conditionally Approved** – closed periodically to harvest pollution events, such as rainfall or increased river flow.
- Restricted** - open to relay (oyster transfer from Restricted to Approved area); controlled purification by special permit
- Conditionally Restricted** – **Temporary suspension** of relay & controlled purification based on pollution events
- Prohibited** - due to actual or potential pollution.



Areal closures intended to protect human health, protect experimental areas



COMMERCIAL & RECREATIONAL AERIAL CLOSURES (FR, SA, SU)					
DATE	Description	DATE	Description	DATE	Description
1985		1997		2009	
1986	East Hole, Platform Bar, Hotel Bar	1998		<b>2010</b>	
1987		1999		2011	
1988		2000		2012	
1989		2001		2013	
1990		2002		2014	SHA 1601, 1611 when 1642 closed; East Hole.
1991		2003		2015	EAST Hole SUMMER, re-opened 5/7,14,21,28, closed WINTER; 1601, 1611 when 1642 closed;
1992		2004		2016	EAST Hole 9/21-6/1 except Mo, 6/1-8/31; 1612, 1622 s of line due E Sheepshead Bayou mouth
1993		2005		2017	SHA 1612, 1622 (see rule 5-L-1.003 FAC south of line due east mouth Sheepshead Bayuo) & Fr Sa Su SHA 1642 5/4-5/31. If closed Mo Tu, fish Fr; if closed We Th, fish Sa. EAST HOLE 6/1-8/31.
1994		2006		2018	East Hole, N John Gorrie Memorial Bridge, Hotel Bar Experimental Area 6/1-9/1; ENTIRE BAY 9/1-9/3; SHA 1612, 1622 & Bulkhead Bar Experimental Area 9/4-5/31/2019
1995		2007		2019	ENTIRE BAY 9/1-9/3; Bulkhead Bar & SHA 1612, 1622 thru 5/31/2019
1996		2008		2020	SHA 1612 and 1622 south of Sheepshead Bayou; Bulkhead Bar Experimental Area from Sept. 3- May 31



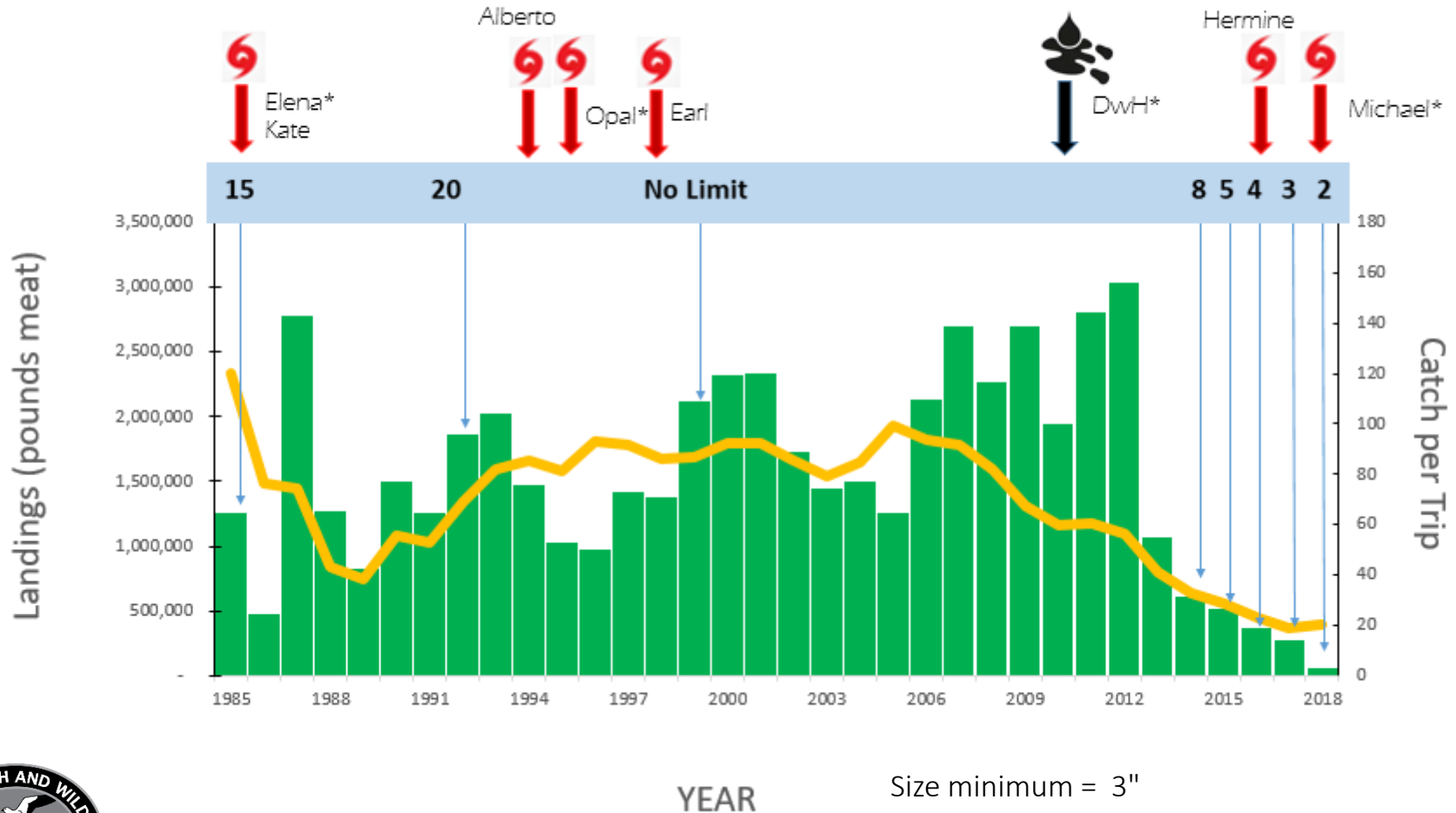
Daily weekend closures intended to reduce fishing pressures on oyster stock



COMMERCIAL DAILY CLOSURES (FR, SA, SU)					
DATE	Description	DATE	Description	DATE	Description
1985		1997		2009	
1986	F,Sa, Su; 4pm-sunrise	1998		2010	<b>DWH DISASTER</b> - REMOVED SA due to DwH hardships - 6/5-8/31/2010; REMOVED
1987		1999	Fr, Sa SUMMER	2011	REMOVED ALL 9/1-11/16/2011
1988	REMOVED	2000		2012	REMOVED ALL 6/1/2012 YEAR ROUND
1989		2001		2013	Fr, Sa Apalach 6/1-8/31/2013 SUMMER
1990		2002		2014	SUMMER Fr, Sa 6/1-8/31/2014; WINTER Fr, Sa, Su 9/1/2014-
1991	F,S, S 7/1-9/30 SUMMER; S,S 10/1-6/30 WINTER; sunrise- sunset except in presence of monitoring stations;	2003		2015	Fr Sa Su WINTER thru 5/31/2015; SUMMER 6/1-7/16/2015; Sa Su 7/20-8/28/2015; Fr Sa Su 9/21/2015-6/1/2016
1992	S,S thru-6/30 WINTER; sunrise- sunset except in presence of monitoring stations;	2004		2016	Fr Sa Su thru 6/1/2016; 6/1-7/17; Sa Su 7/18-8/31/2016
1993	REMOVED WINTER 11/16-6/30	2005		2017	Sa Su 6/1/2016-5/31/2017; Fr Sa Su SHA 1642 5/4-31/2017 (see areal closure); Fr Sa Su 6/1-7/17 ; Sa Su 6/18-8/31 /2017
1994	REMOVED thru 6/30, Sa Su 11/14-12/12	2006	REMOVED 11/16/2006-5/31/2007	2018	Fr, Sa,Su 6/1-9/1/2018; All week 9/1-9/3/2018; Fr Sa Su
1995	?????	2007		2019	Fr Sa Su thru
1996		2008		2020	Fr Sa Su, Labor Day 9/1/-5/31 WINTER

# FWC Franklin County Oyster Landings

Landings & Catch per Trip



Size minimum = 3"

- 15% tolerance undersized attached
- 5% undersized unattached

Cull undersized at harvest, return to reef from which harvested.