

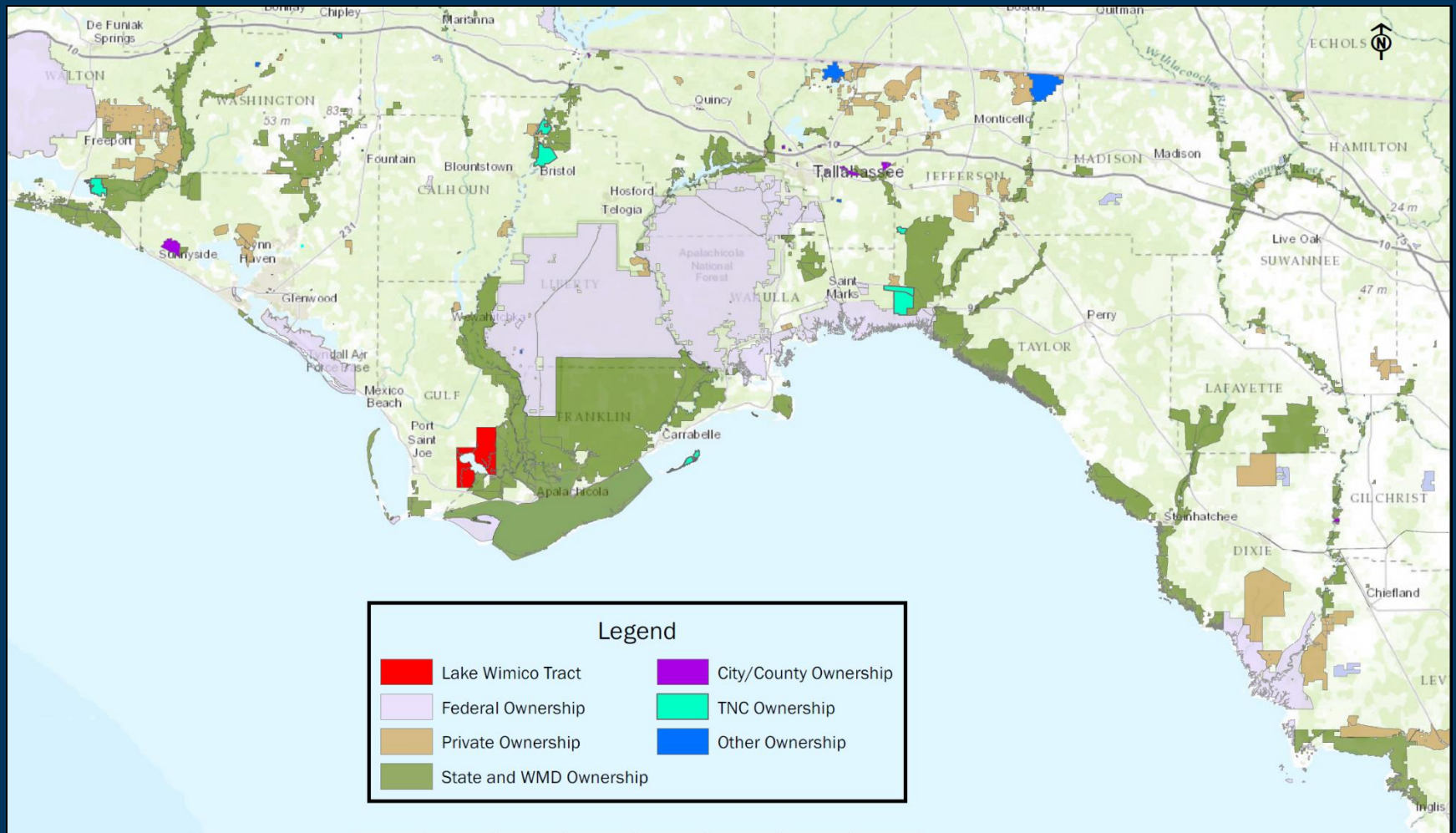


Lake Wimico, Gulf County, FL  
Lindsay Stevens, Land Program Manager

- Lake Wimico is located within a renowned biodiversity hotspot.
- The project area has long been identified by TNC, state and federal partners as being critically important for conservation.
- The Lake Wimico project is part of the larger St. Joe Timberland Florida Forever project and ranked #2 in the Climate Change category on the state of Florida's Florida Forever list

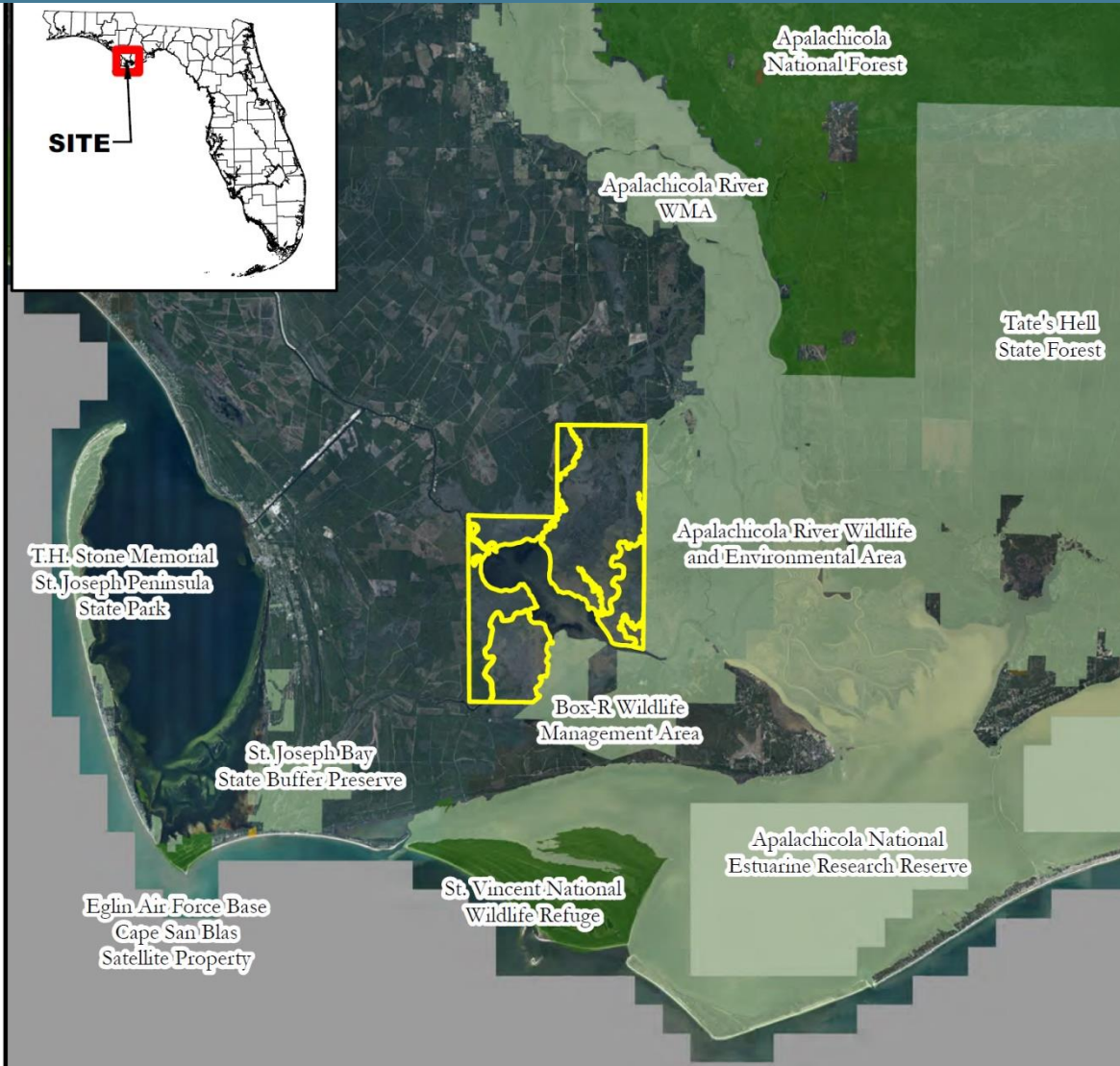


# Managed Lands – Regional View



# Overview of Lake Wimico Project

- The Lake Wimico project area is a 20,146± acre parcel at the west end of the Apalachicola Bay in the Florida Panhandle
- Includes 4,055-acre, tidally influenced Lake Wimico proper
- The safeguarding of Lake Wimico helps preserve and protect the water quality of the highly productive Apalachicola River, Apalachicola Bay, and Gulf of Mexico.



Data Sources:  
 1) Cadastral 2016 Data  
 2) Florida Conservation Lands  
 3) Bing Aerials

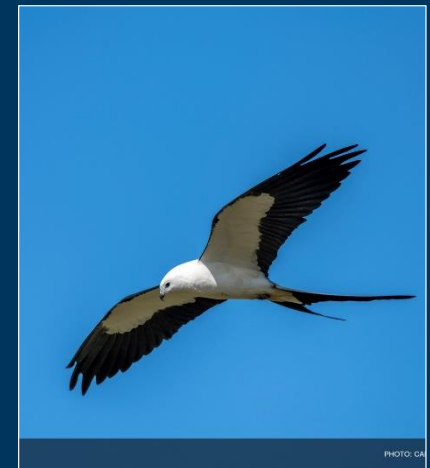
# Biological Significance

- Protection of Lake Wimico adds over 20,000 acres to an existing interconnected corridor of conserved lands that totals over 1 million-acres
- Enables the protection, restoration and maintenance of the quality and natural functions of an important land, water and wetland ecosystem.
- Cypress-dominated swamps, marshes and water flow help ensure a resilient landscape that provides adaptation to impacts of climate and sea level rise, and habitat for ecological communities.



The lake and its surrounding lands and waters are home to of several federally or state imperiled species including:

- Florida black bear
- Manatee
- American alligator
- Bald eagles
- Ospreys
- Swallow-tailed kites
- Mississippi kites



# Land Acquisition

- Funded by a grant from the National Fish and Wildlife Foundation (NFWF) FL Gulf Environmental Benefit Fund (GEBF) and TNC donor support.
- TNC acquired fee simple title and simultaneously donated to the State of Florida in December 2019.



NFWF

- FWC will actively manage the Lake Wimico property with the intent of restoring its vegetative composition, habitat structure/function and species distribution.
- Existing management activities on adjacent managed lands (Box-R WMA) will be extended onto the Lake Wimico tract to restore and enhance the Project.
  - Prescribed fire
  - Hydrologic restoration
  - Reforestation and timber thinning
  - Other mechanical treatments (roller chopping, mowing, etc.)





