

ABSI SCIENCE UPDATE

Sandra Brooke Ph.D.
ABSI Project Lead
Research Faculty, FSUCML



JANUARY 13, 2021



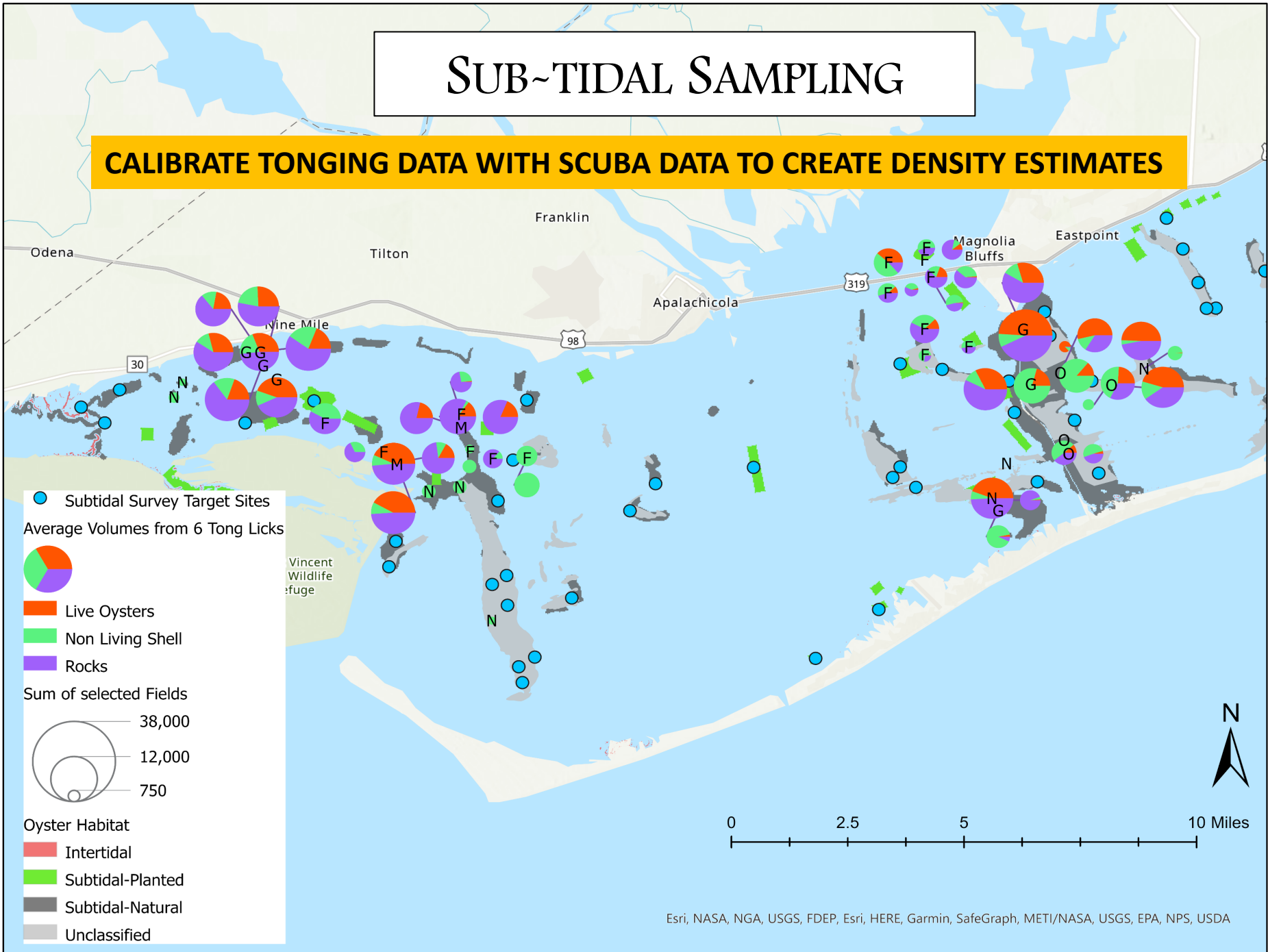
Map of deployed YSI dataloggers



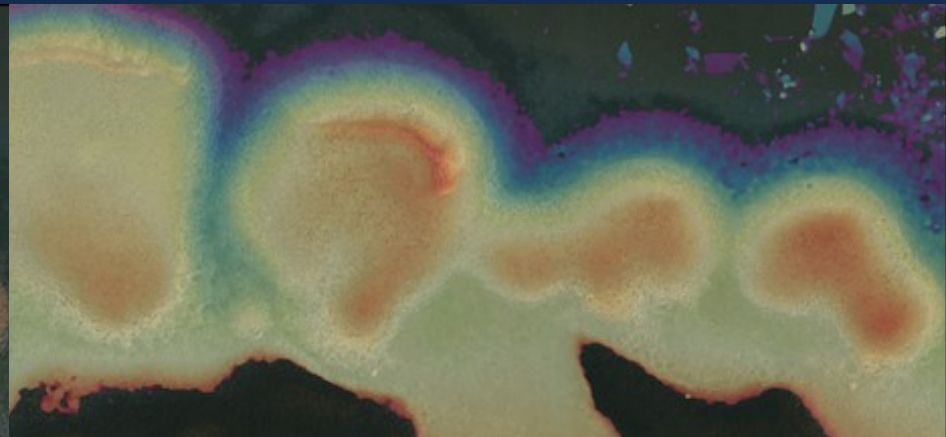
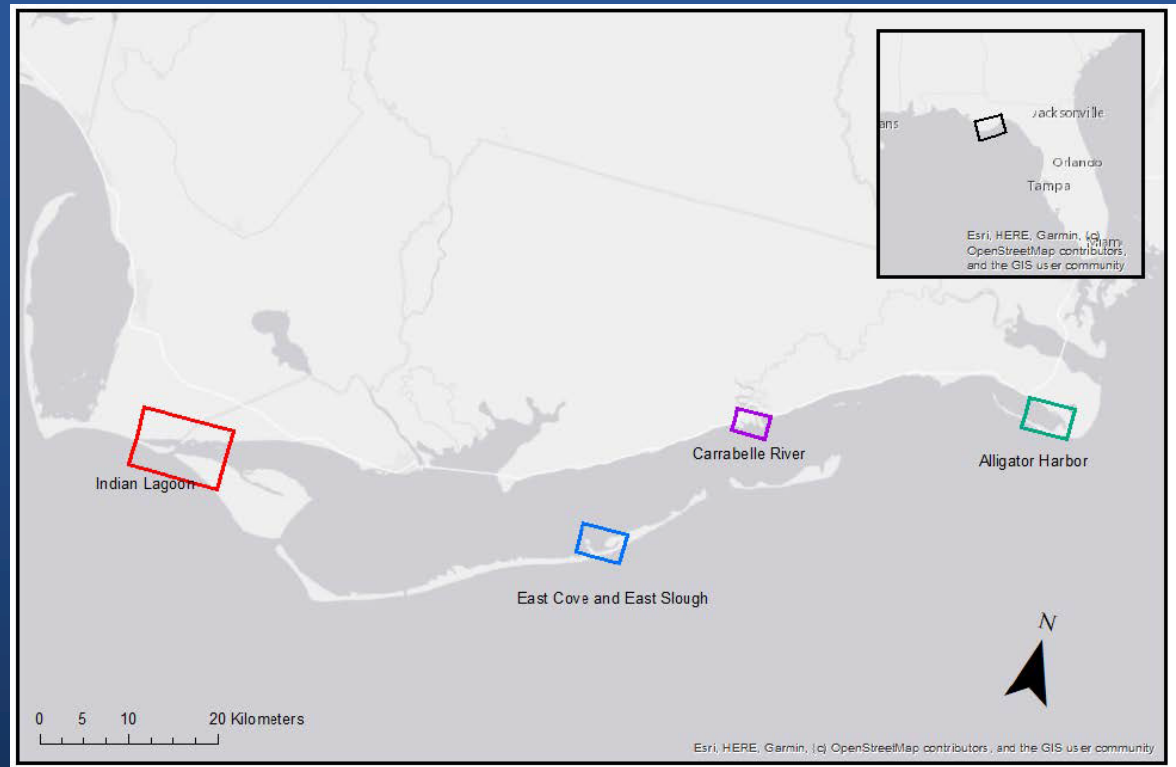
0 2 4mi

SUB~TIDAL SAMPLING

CALIBRATE TONGING DATA WITH SCUBA DATA TO CREATE DENSITY ESTIMATES



Intertidal Habitat Monitoring

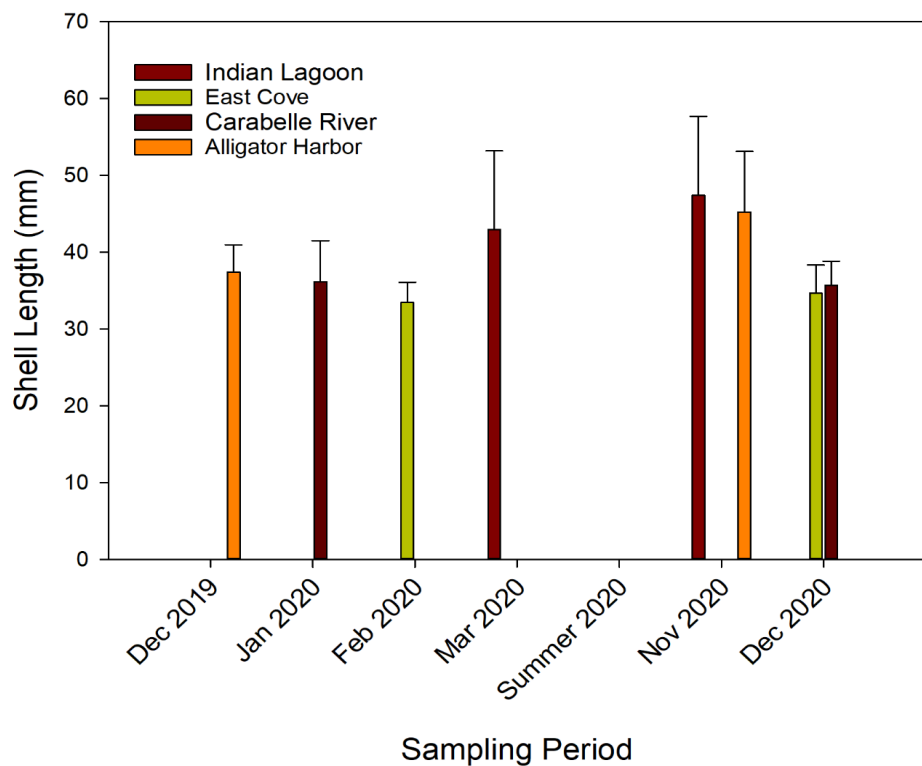


Calibrate Drone data with field data to increase accuracy of population density

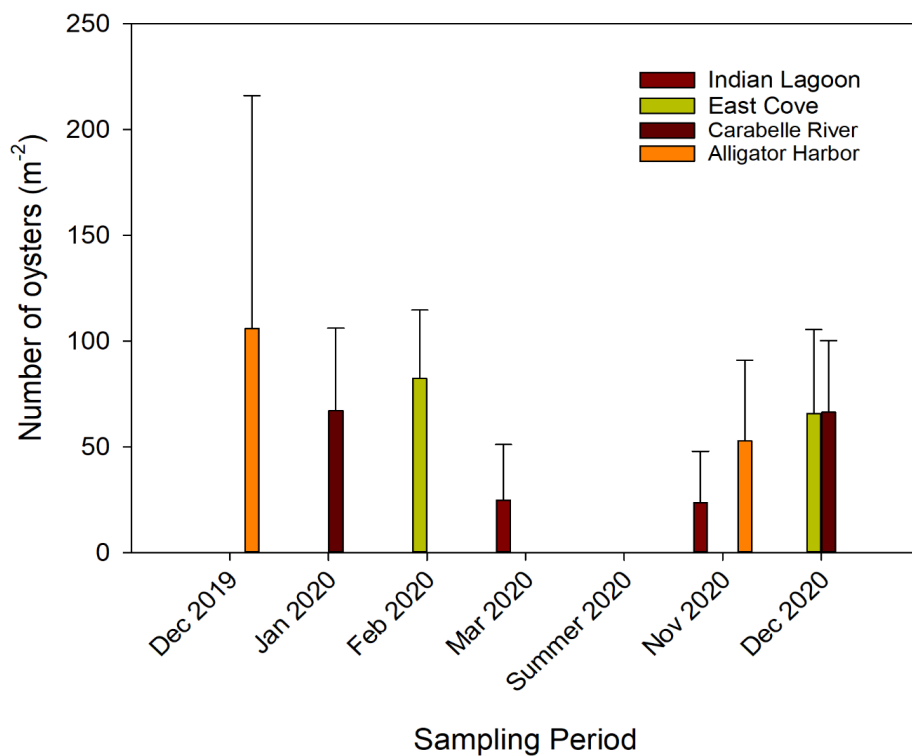


Inter-tidal monitoring data from 2020

Shell Length (mm)



Abundance (m²)



Other studies

GENETIC STUDY:

Samples collected from Apalachicola Bay, collections needed from elsewhere

Processing begins this month

FOOD WEB STUDY

Dry season samples collected and partially processed

Wet season samples will be collected in the spring

HYDRODYNAMIC MODELS

Watershed model ~ developing flow scenarios but need input on estuarine metrics

Bay flow models~ model framework in development, will be running scenarios in a month or so

A wide-angle photograph of a sunset over a large body of water. The sky is a mix of deep blue, orange, and yellow, with scattered clouds catching the low sun. The water is calm, reflecting the colors of the sky. In the foreground on the left, there are tall, green reeds. In the distance, a long bridge spans across the water. The overall mood is peaceful and contemplative.

Questions?