

ABSI SCIENCE UPDATE

Sandra Brooke Ph.D.
ABSI Project Lead
Research Faculty, FSUCML



FEBRUARY 24, 2021

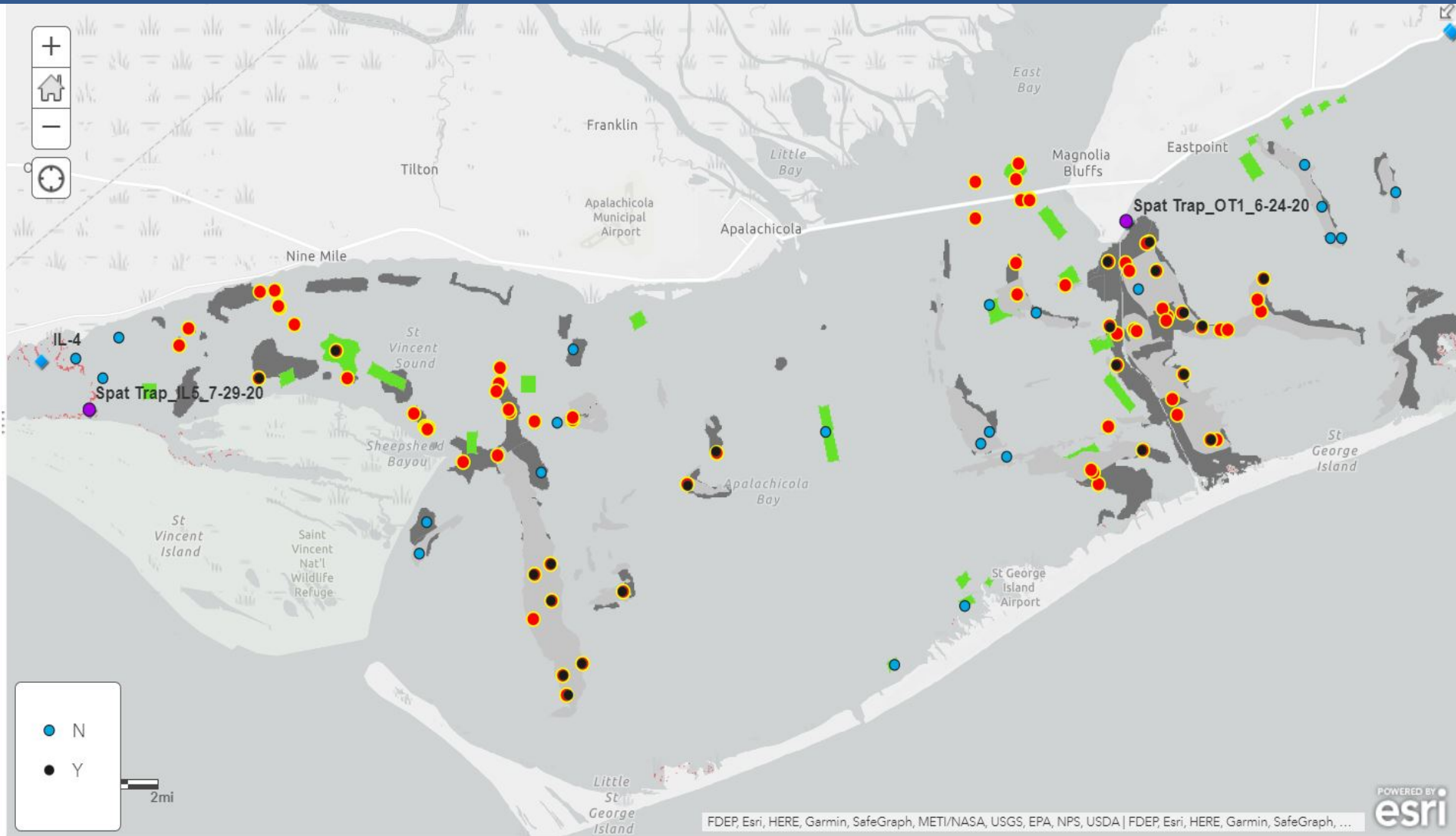


YSI dataloggers – Lake Wimico moved to Sikes Cut



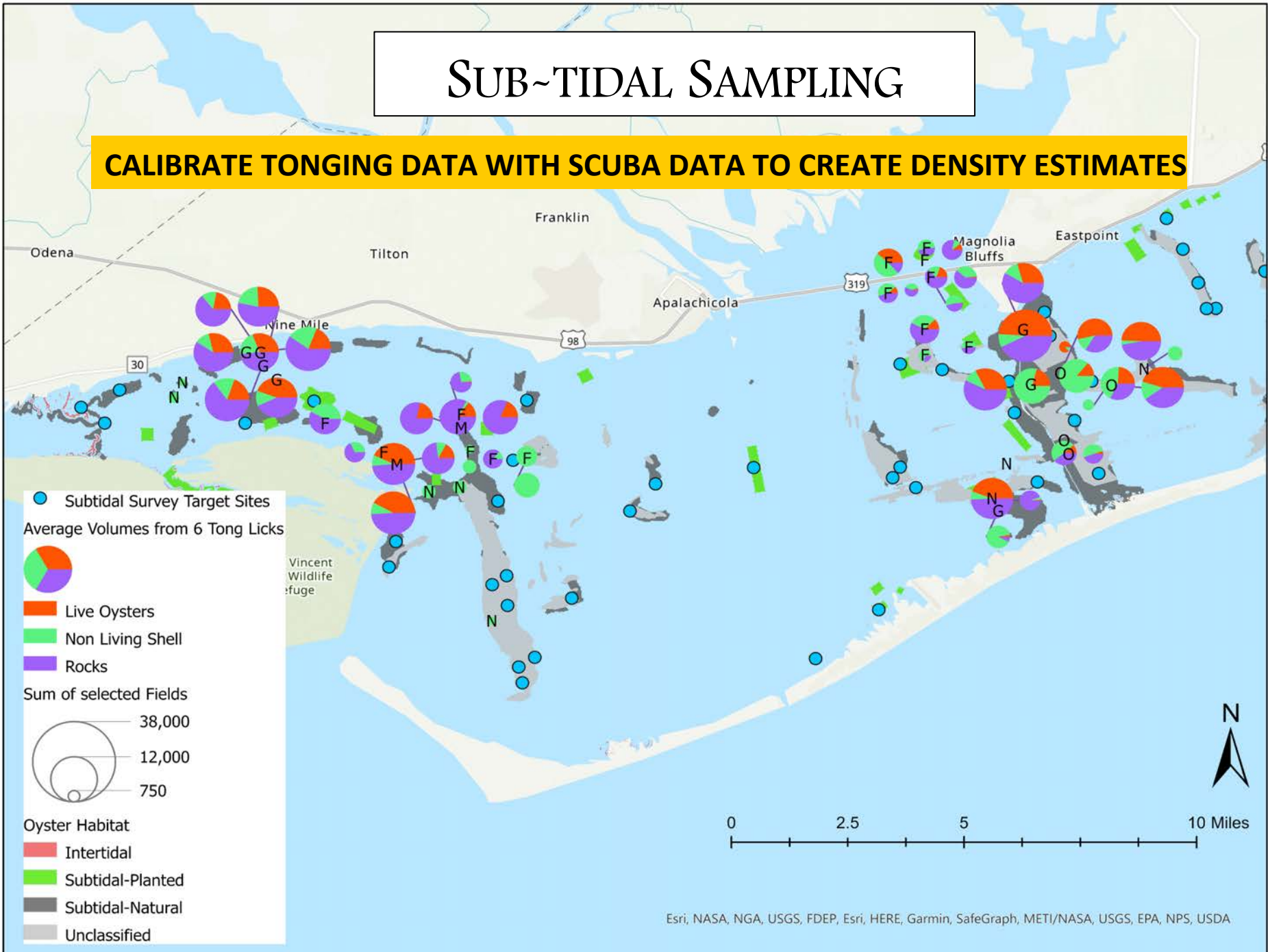
SUB-TIDAL SAMPLING

ALMOST COMPLETE COVERAGE OF KNOWN OYSTER HABITAT

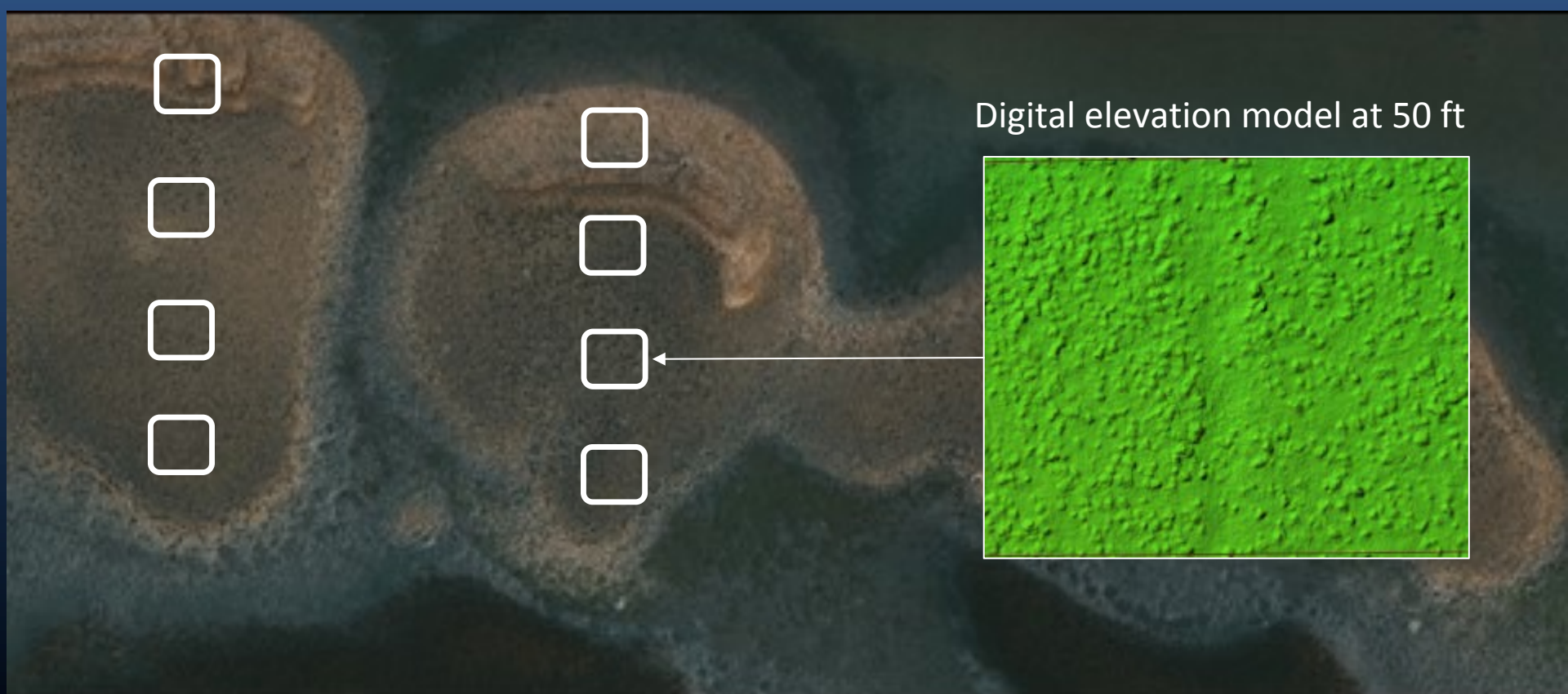


SUB~TIDAL SAMPLING

CALIBRATE TONGING DATA WITH SCUBA DATA TO CREATE DENSITY ESTIMATES



Drone flights will be conducted at 50 ft height to enable us to distinguish clump sizes over a broad area. This will help expand density surveys.



Digital elevation model at 50 ft

Other studies

FOOD WEB STUDY

Sediments and plankton have been processed from dry season
No significant reduction in terrestrial carbon from earlier study
Oysters and most fish have been collected and are being processed
Wet season samples will be collected in the spring

POLLUTION STUDY

Collaboration with FAMU scientist to investigate levels of pesticides and heavy metals in surface sediments and cores (historical values)

RESEARCH STATIONS

ABSI team is developing a series of research stations to address some unanswered questions such as why are oysters not establishing in some locations, how fast does shell dissolve under different conditions, how does recruitment, survival, growth, condition, reproduction and disease vary spatially and temporally throughout the bay including intertidal areas.

A wide-angle photograph of a sunset over a large body of water. The sky is a mix of deep blue, orange, and yellow, with scattered clouds catching the low sun. The water is calm, reflecting the colors of the sky. In the foreground on the left, there are tall, green reeds. In the distance, a long bridge spans across the water. The overall mood is peaceful and contemplative.

Questions?