

Pensacola & Perdido Bays Estuary Program

~~— Matt Posner & Donald
Killorn~~

February 24th, 2021

History of Pensacola & Perdido Bays EP

- 1989: Bay Area Resource Council (BARC) established
- 2000: 1st Annual Bay Day event
- 2010: Deepwater Horizon oil spill
- 2017: EPA issues funding opportunity to establish a new estuary program in Northwest Florida
- August 2017: EPA announces selection of BARC's proposal to establish the Pensacola & Perdido Bays Estuary Program (BARC)
- September 2018: BARC officially transitions into PPBEP
 - Governing Parties: Baldwin, Escambia, Santa Rosa, & Okaloosa Counties, and the cities of Orange Beach, Pensacola, Gulf Breeze, Milton, Century



\$2 million grant award from RESTORE Council and EPA

What is an Estuary Program?

- Stakeholder driven, non-regulatory program
- Involves community stakeholders in the decision-making process
- Measurable goals for water quality, habitat, living resource restoration
- Comprehensive Conservation Management Plan (CCMP), long-term strategic plan, identifies local prioritized action items
- Science-based approach to developing and implementing the CCMP

National Estuary Programs

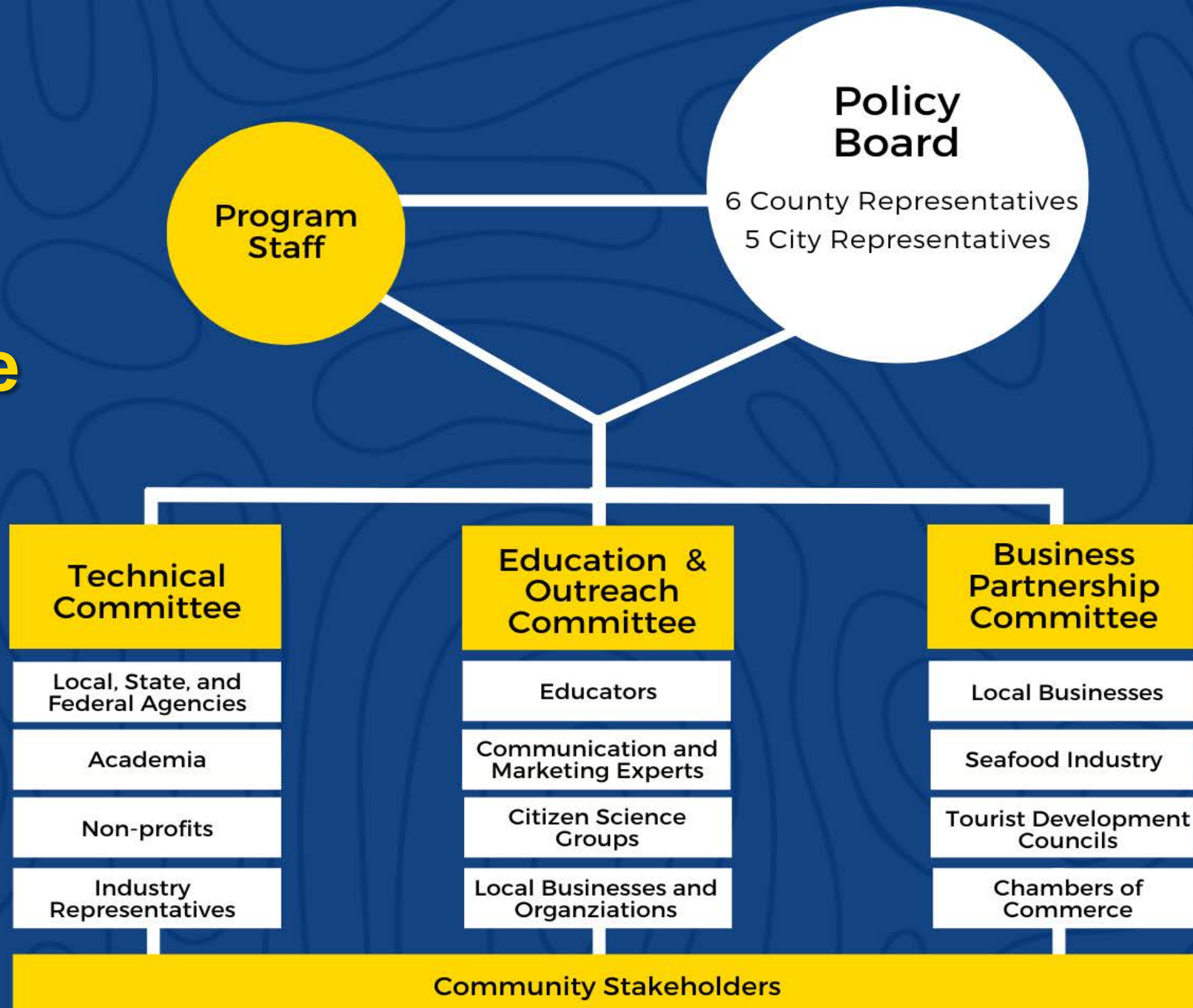


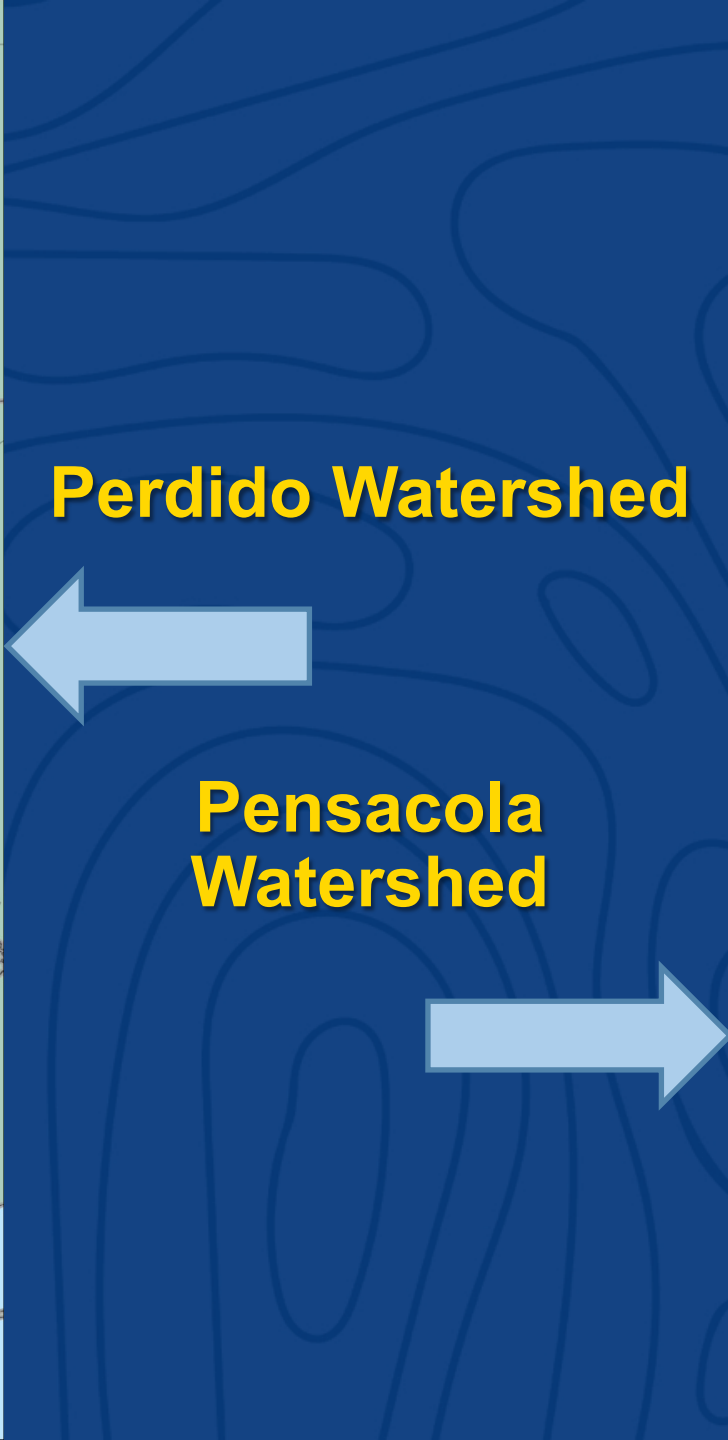
Our Mission

To restore and protect the water quality and natural resources of the Pensacola & Perdido Bays and watersheds through partnerships, using a community-based, scientifically-sound approach to enhance resilience.

**A healthy and sustainable
environment, economy, and
community**

Program Structure





What is a CCMP? Why is it important?



CHARTING THE COURSE:
THE COMPREHENSIVE
CONSERVATION
AND MANAGEMENT PLAN
FOR TAMPA BAY
AUGUST 2017 REVISION

TBEP
TAMPA BAY
ESTUARY PROGRAM
PARTNERSHIP FOR A HEALTHY BAY



to Success: Collaborative Problem Solving

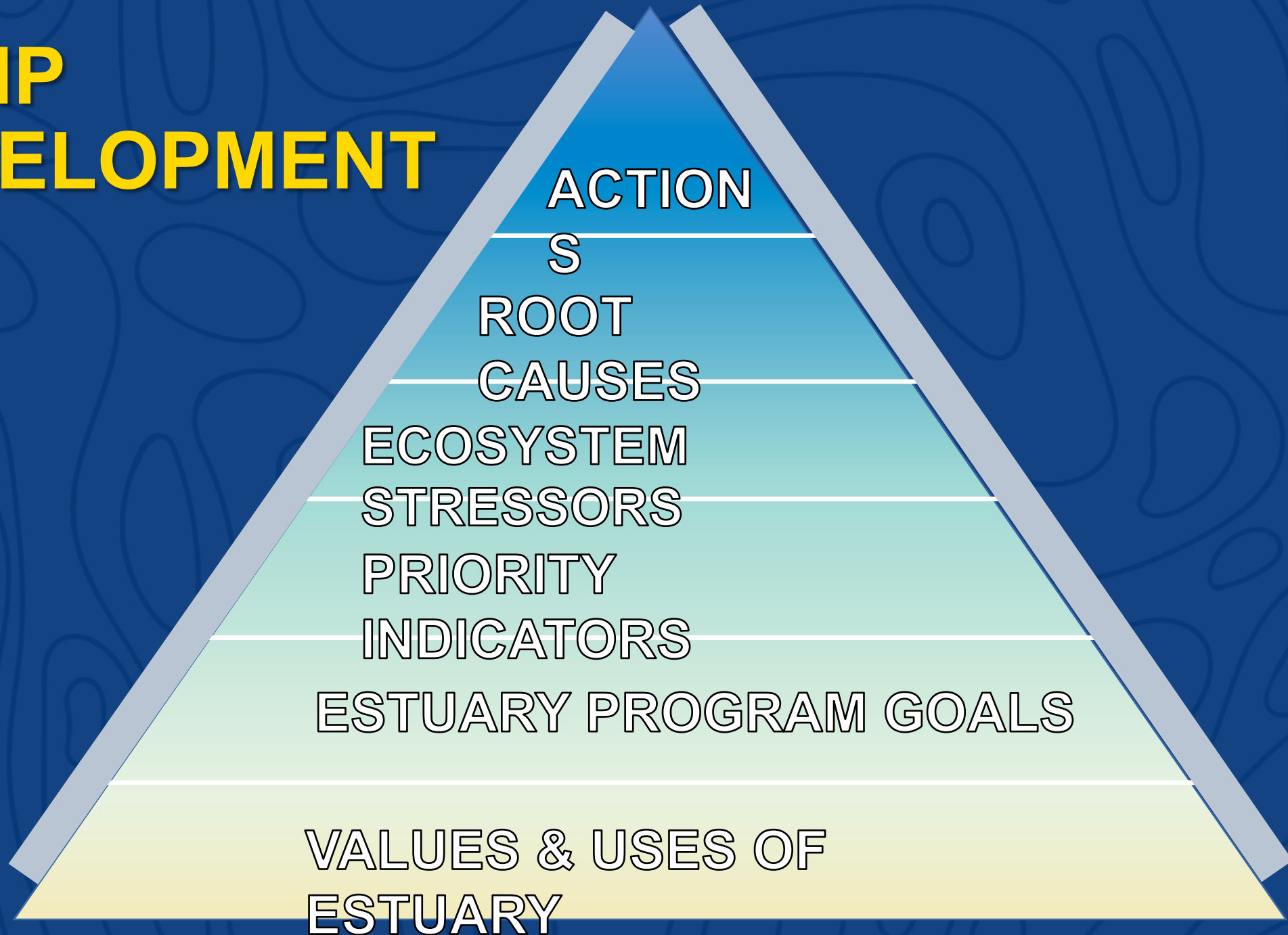
NCCA Addtl Indicators
3.11 TC mtg (stoplight by stem)
provide frame of reference for public
+ why its imp; role it plays into ecosystem

- Dissolved Oxygen - included (6)
- ^{SAY} Seagrass + Cyster dist (% in color + turbidity (3)
- pesticides + TSS (4)
- Invasives (3)
- # of swimming closures @ sp. waterbodies
↳ bacteria alerts
- nutrient data (7)
- bathymetry data + cli change vulnerability (8)
- % impvs surface
↳ canopy cover } factors that affect WS's. (9)

Addtl Indicators 3.11 TC mtg

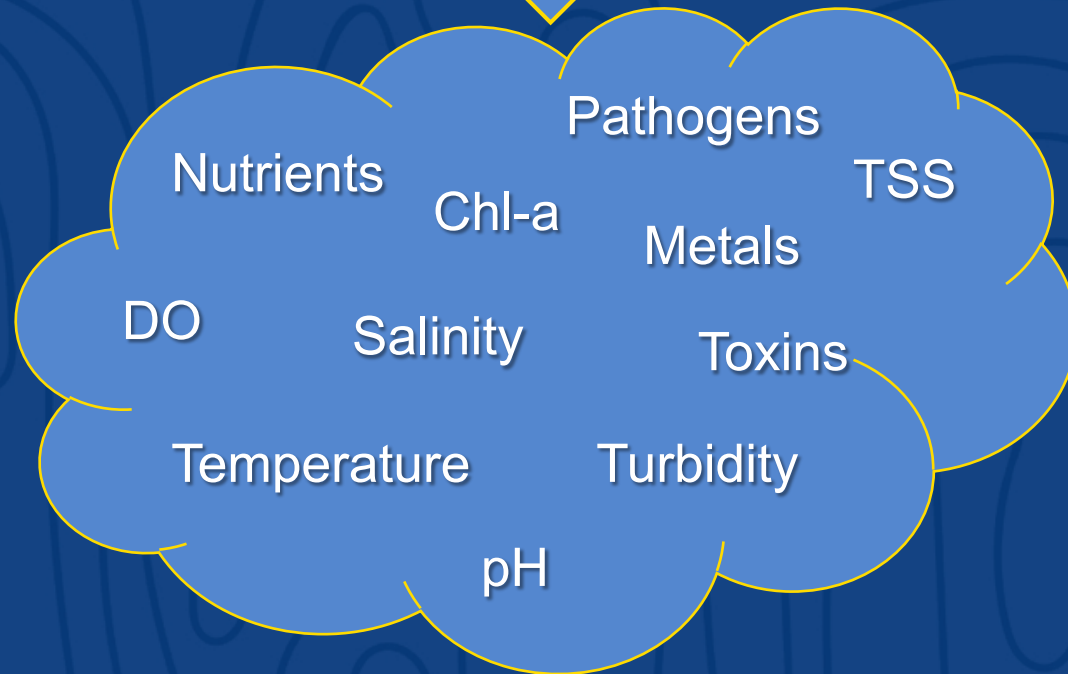
- Armored Shorelines (5)
- Wildlife sightings + popltn trends / dynamics
↳ EC Marine Resrcs Marine Life List
↳ Manatees / Blue Crab / Mullet
- Fisheries Indpnt Monitoring
↳ Abundance / Density of Key Species (10)
- Microplastics (11)
- Sediment Toxicity → expand? (12)
- Protected Species - Sea Turtles, Shorebirds, Bch M. (13)
↳ Show trends; along w/ current conditions
↳ Maps + geographic context
↳ cover changes over time (↑, ↓, -) (14)

CCMP DEVELOPMENT



Water quality

“Quality” can refer to A LOT of different things



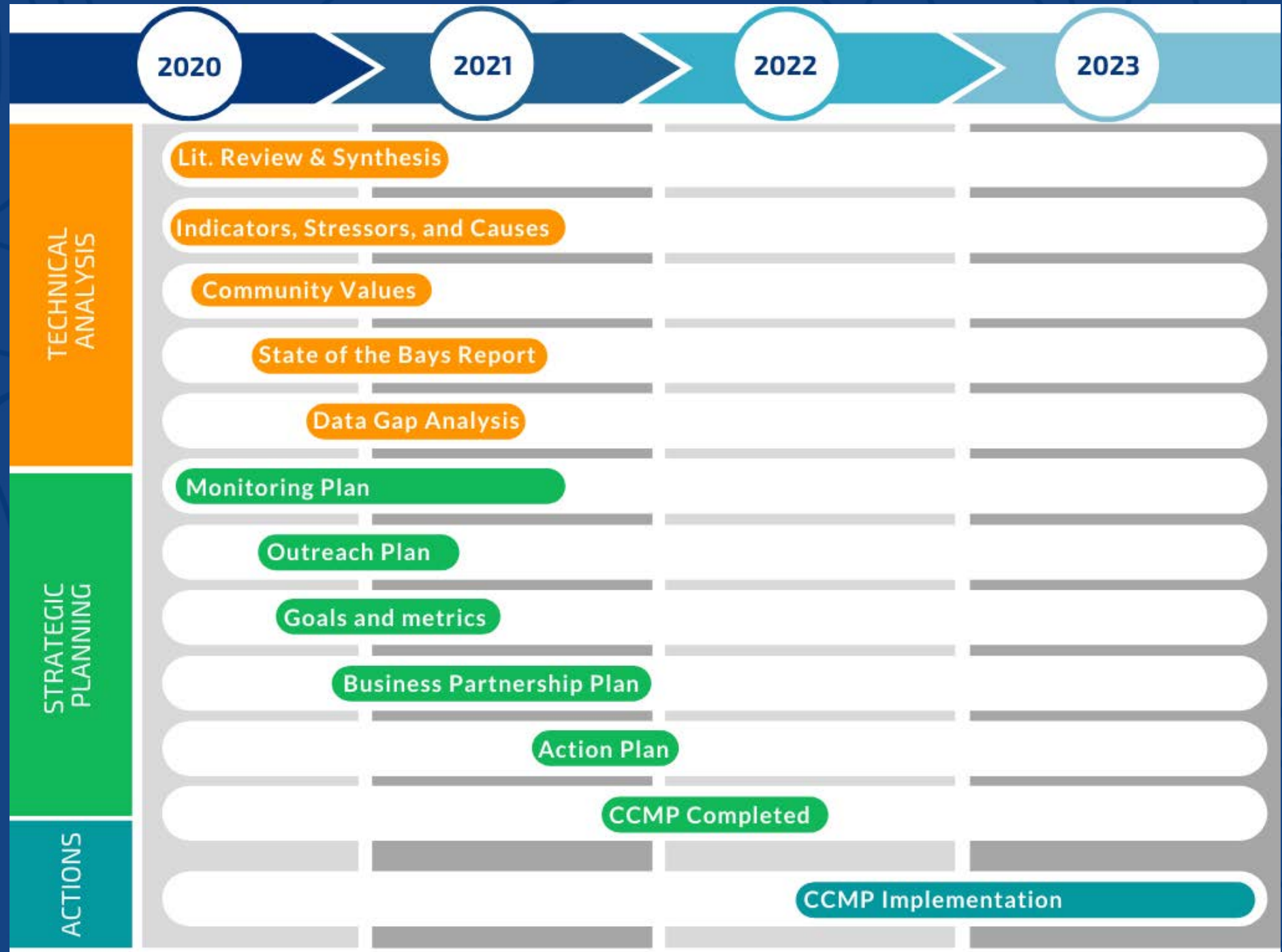
What may be the root cause?

POOR WATER QUALITY

- Stormwater runoff
- Over-use of fertilizers
- Legacy contaminants
- Septic tank leaks
- Habitat loss
- Point source pollution

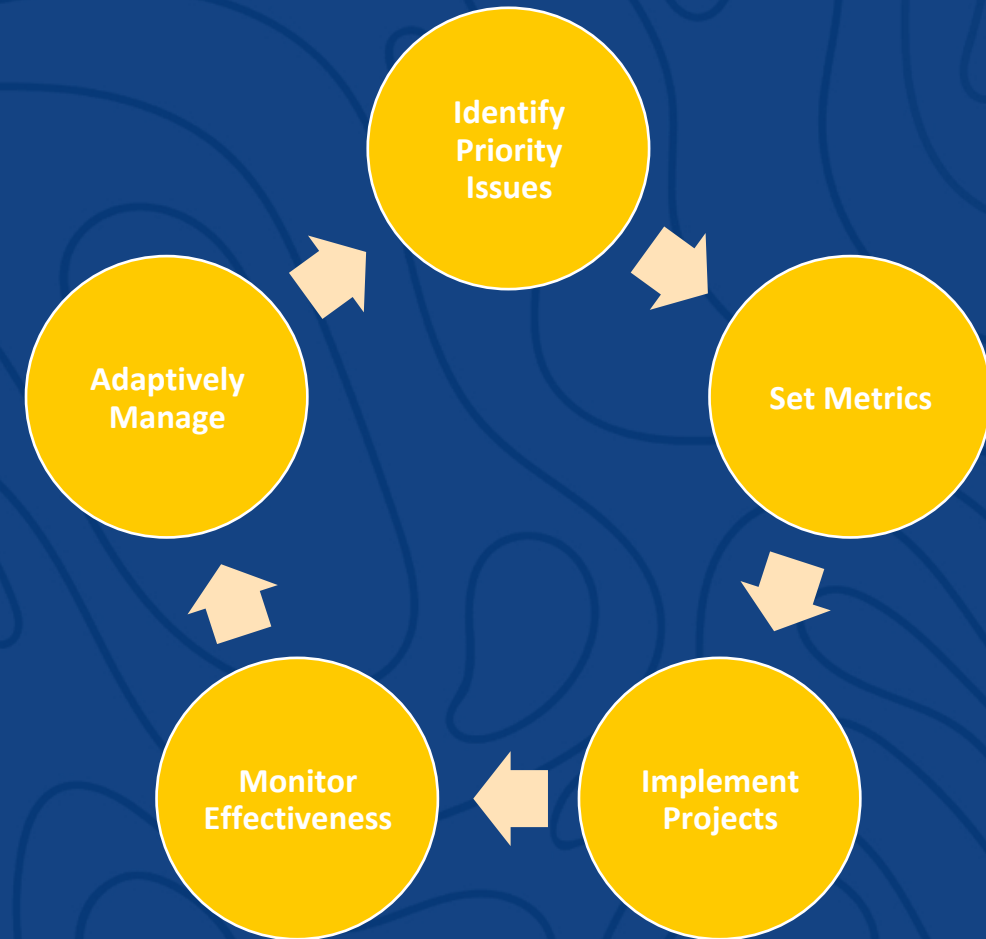


CCMP Timeline



CCMP Implementation

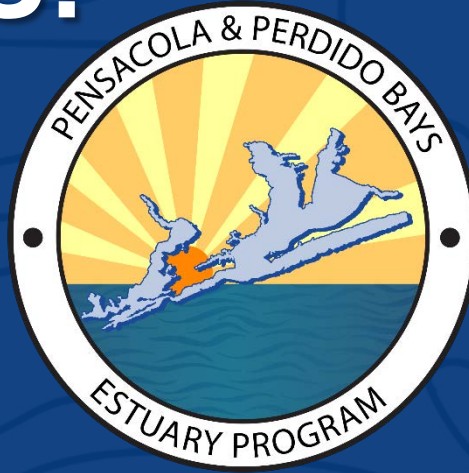
- Watershed Coordination
- Community Outreach & Education
- Comprehensive Monitoring
- Address Priority Issues:
 - Stormwater management
 - Land use change
 - Pathogens, nutrients, sedimentation, & legacy pollutants
 - Domestic & Industrial Wastewater
 - Agriculture BMPs



National Estuary Programs



CONTACT US!



www.ppbeb.org

**FOLLOW US ON SOCIAL
MEDIA!**



@PPBEPFLAL



@PPBEP_FLAL