

ABSI SCIENCE UPDATE

Sandra Brooke Ph.D.
ABSI Project Lead
Research Faculty, FSUCML



AUGUST 18, 2021



Mapping

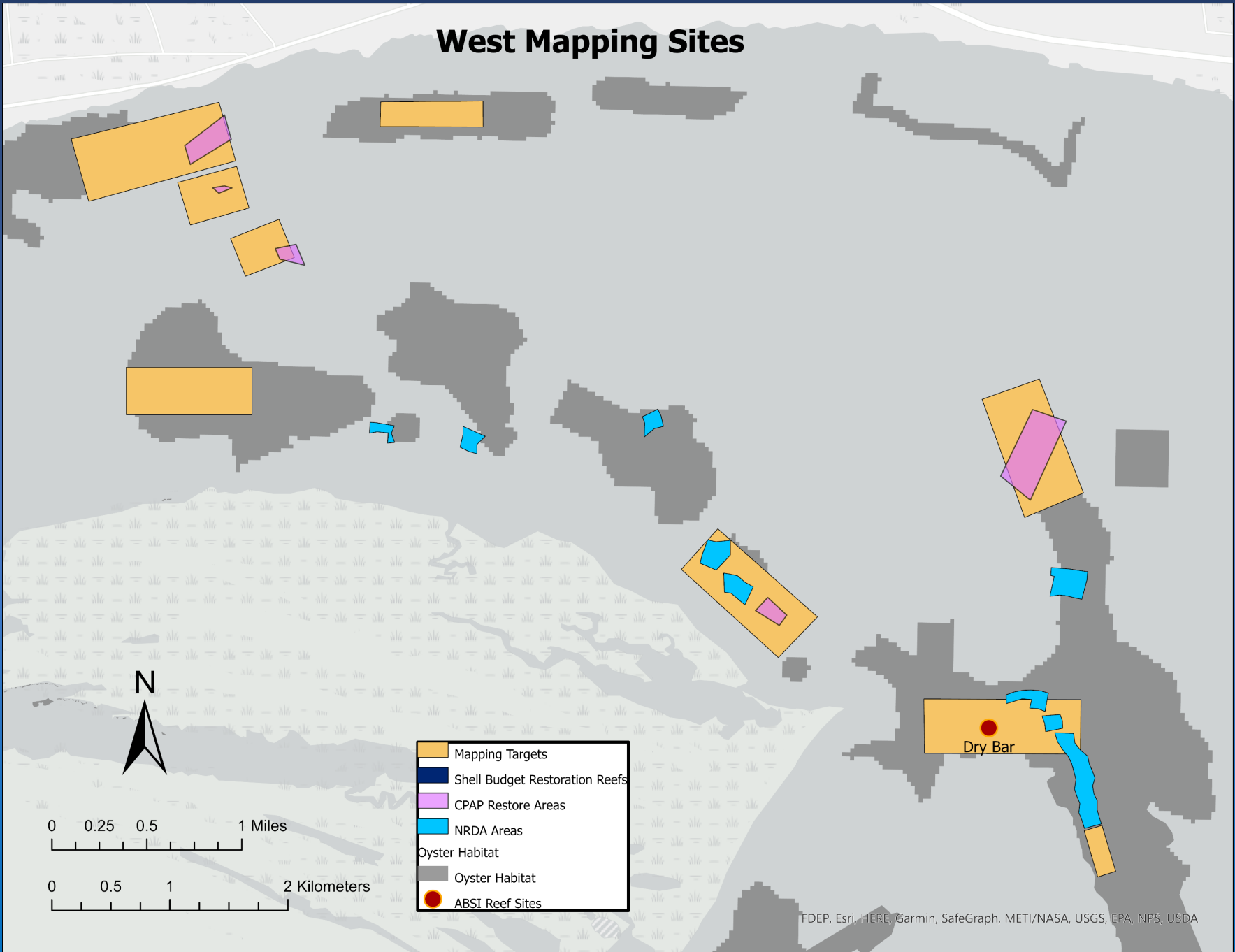
NOARC

National Oceans and Applications Research Center



- 1600 acres mapped at low resolution using an Autonomous survey vehicle that takes simultaneous sonar and depth data with overlapping swaths
- 400 acres to be mapped at high resolution (5cm)

West Mapping Sites

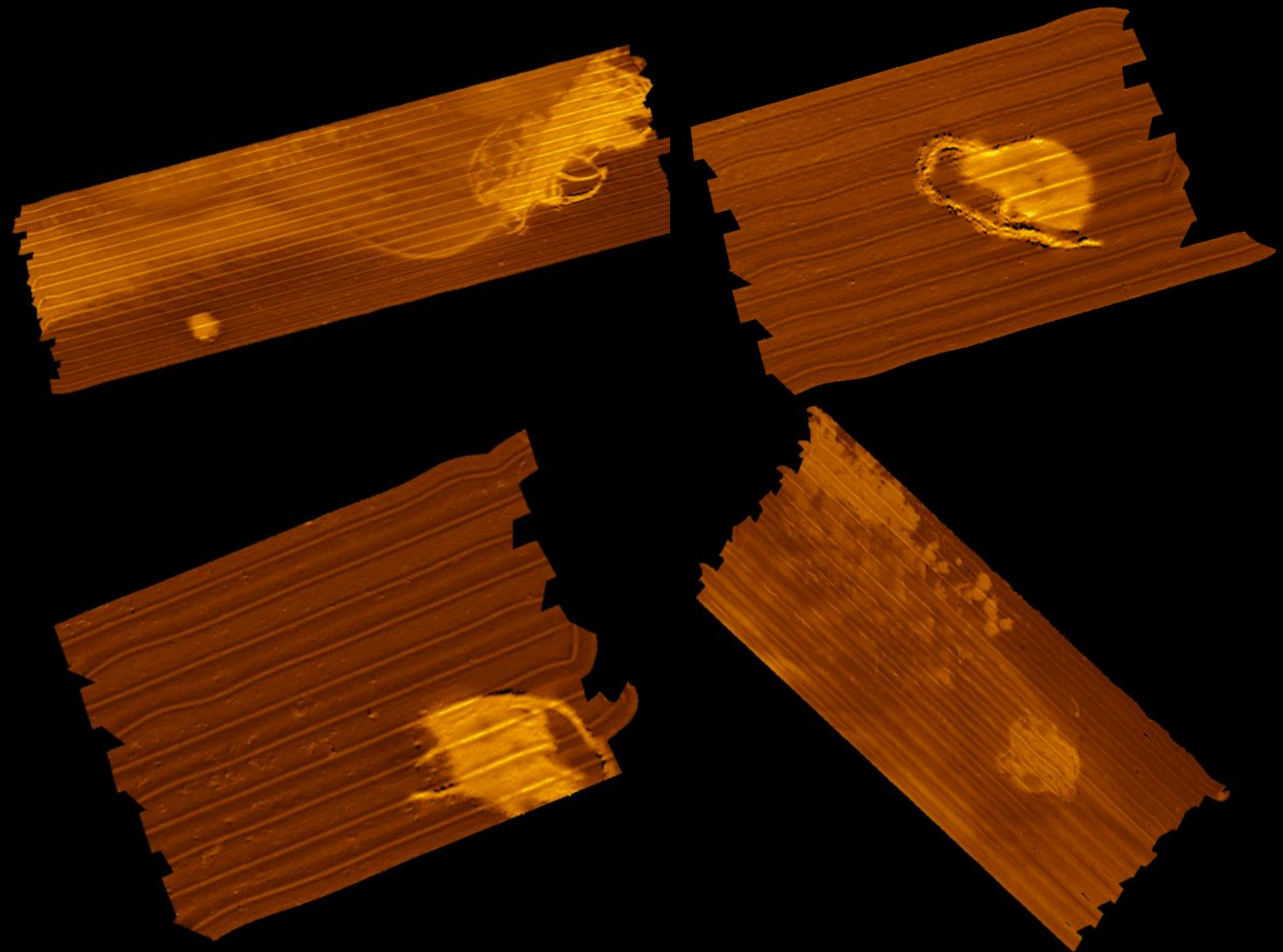


- Mapping Targets
- Shell Budget Restoration Reefs
- CPAP Restore Areas
- NRDA Areas
- Oyster Habitat
- ABSI Reef Sites

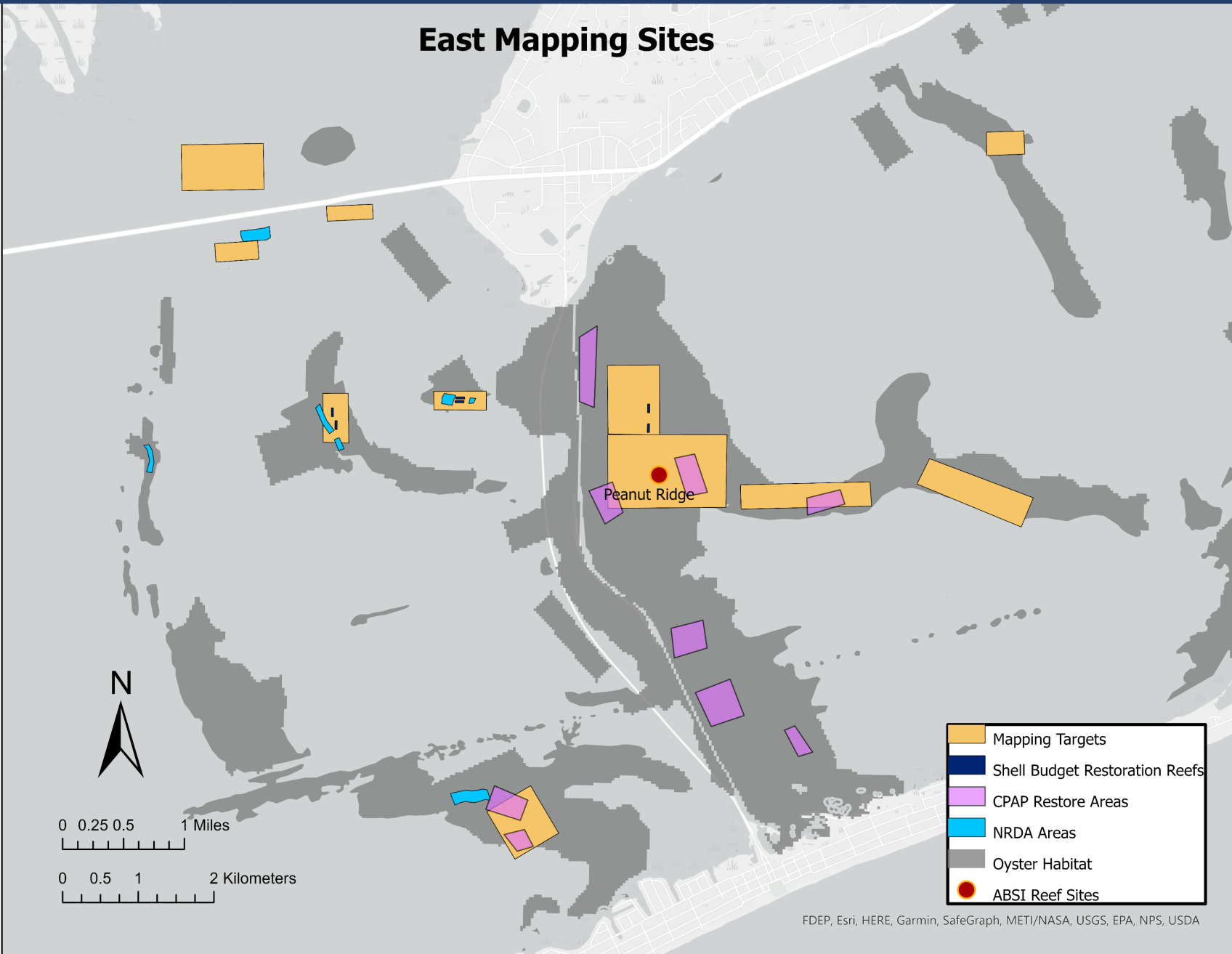
0 0.25 0.5 1 Miles

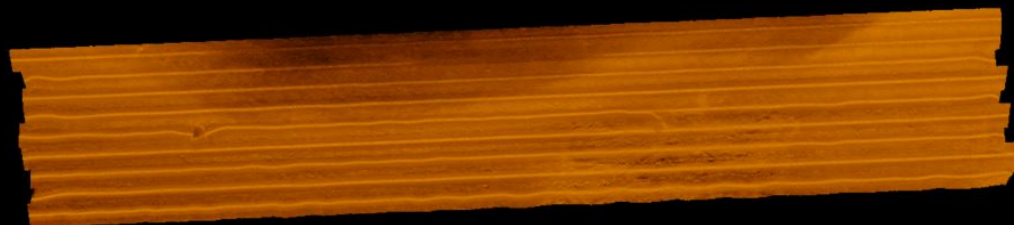
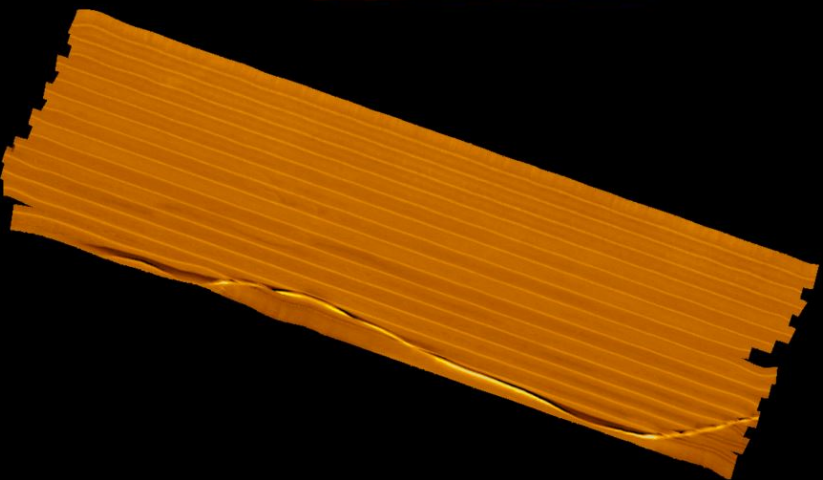
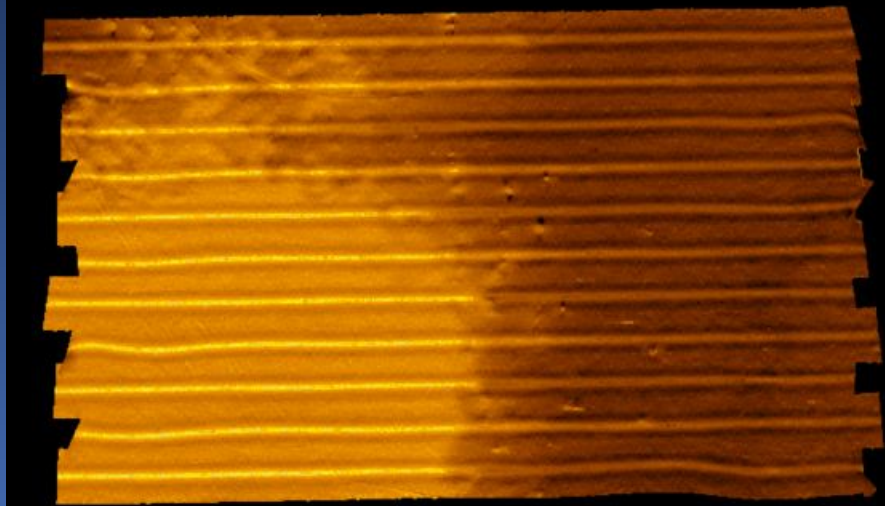
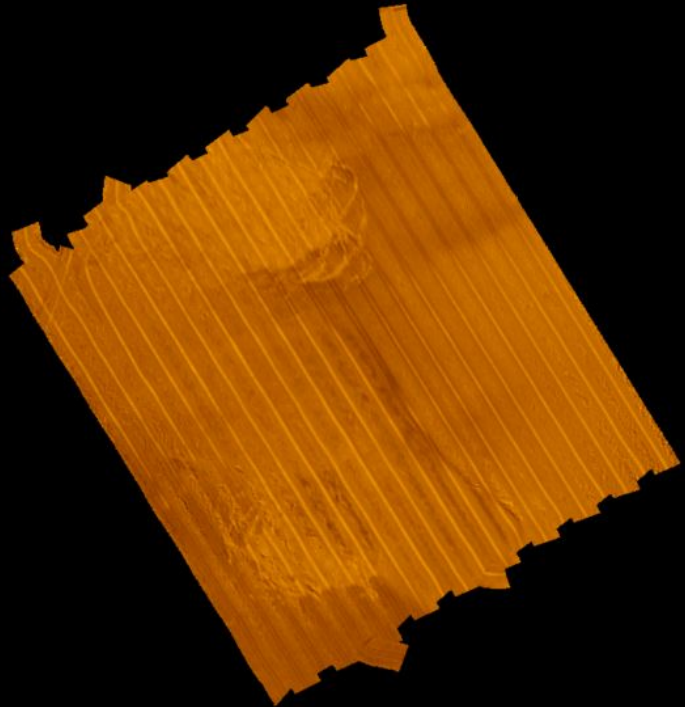
0 0.5 1 2 Kilometers

Dry Bar

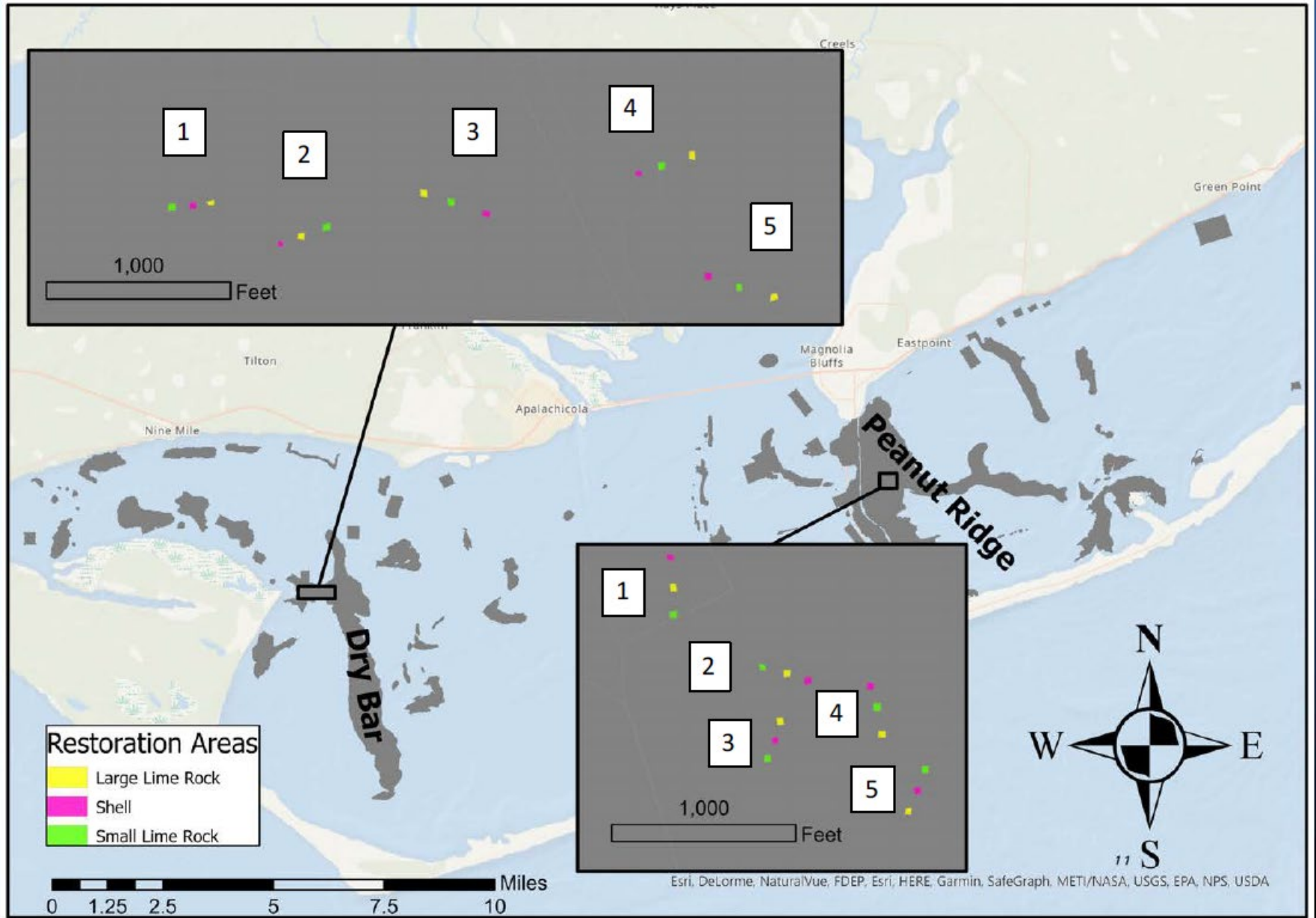


East Mapping Sites

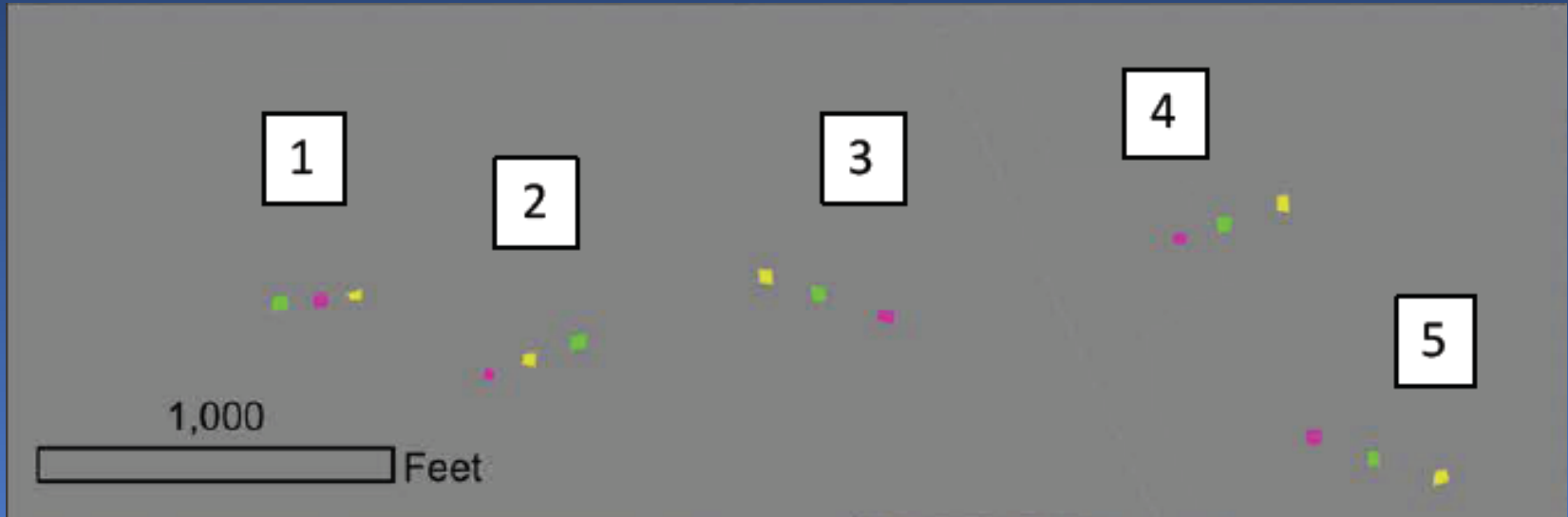




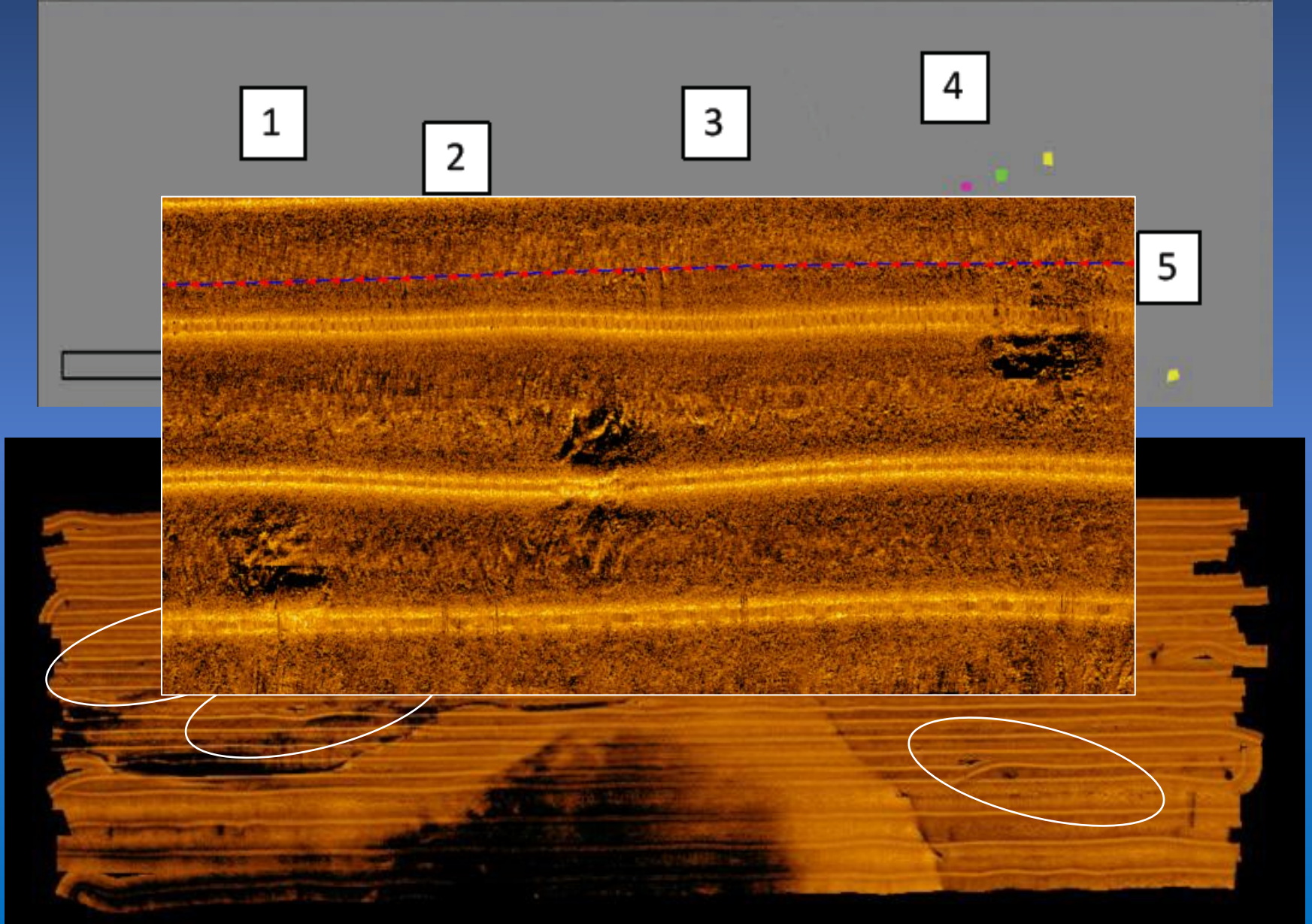
ABSI Experimental Oyster Restoration Sites



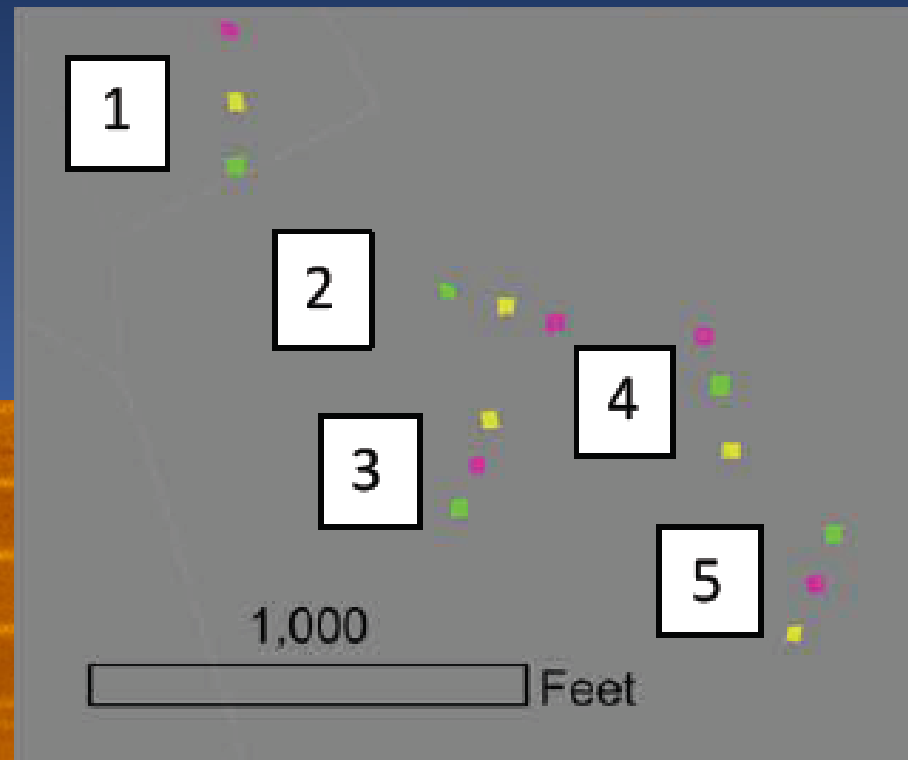
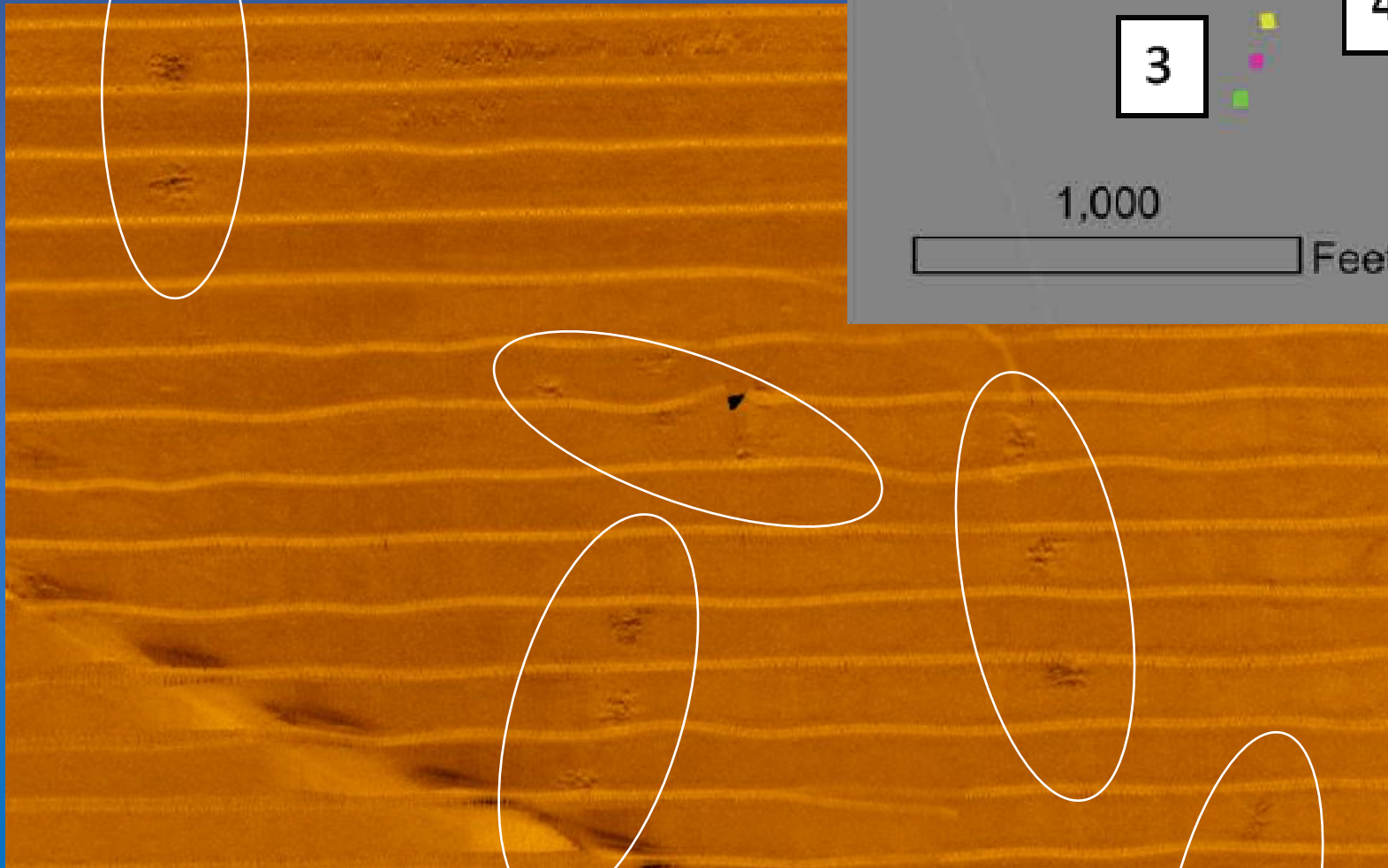
Dry Bar ABSI experiments



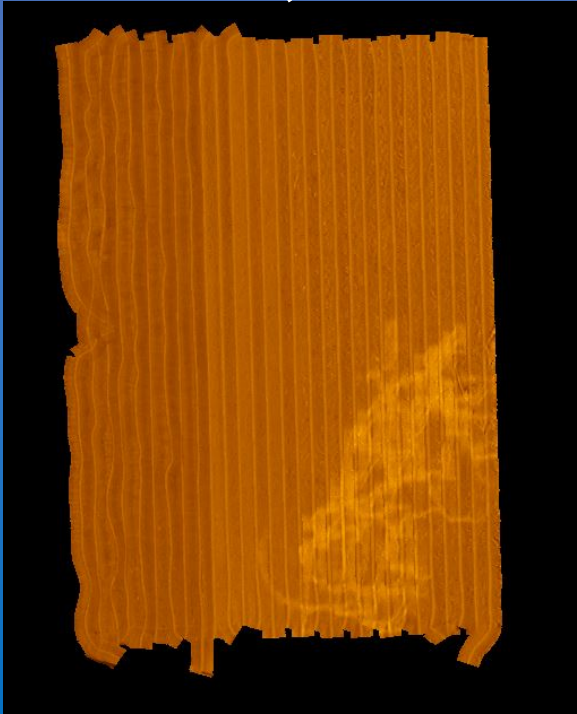
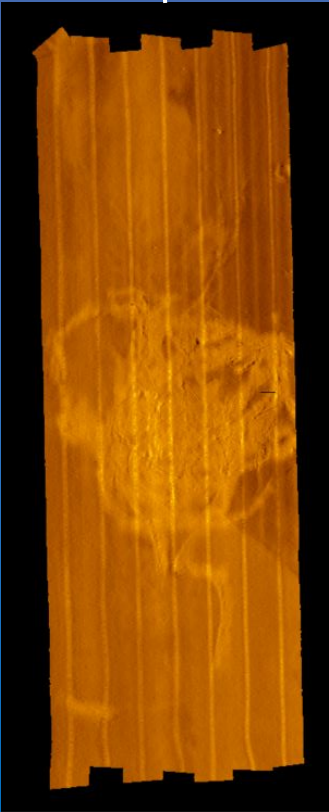
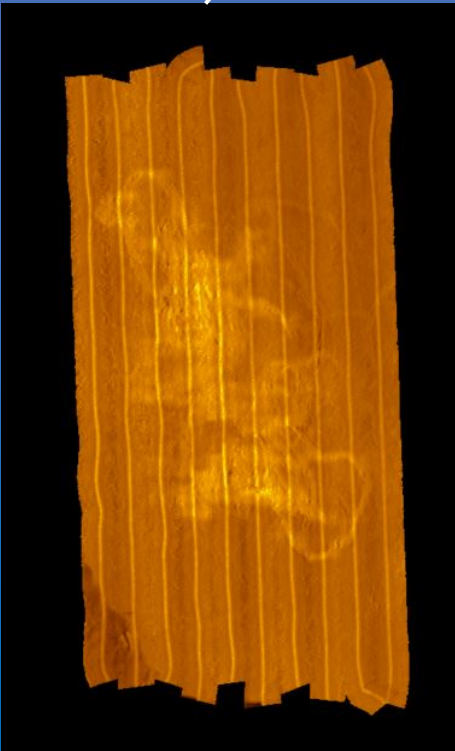
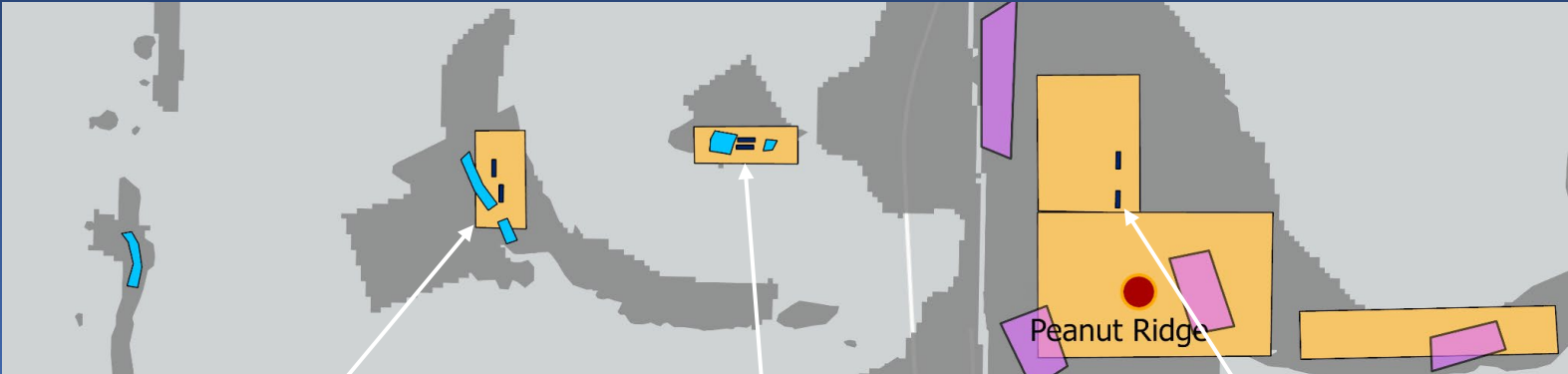
Dry Bar ABSI experiments



Peanut Ridge ABSI experiments



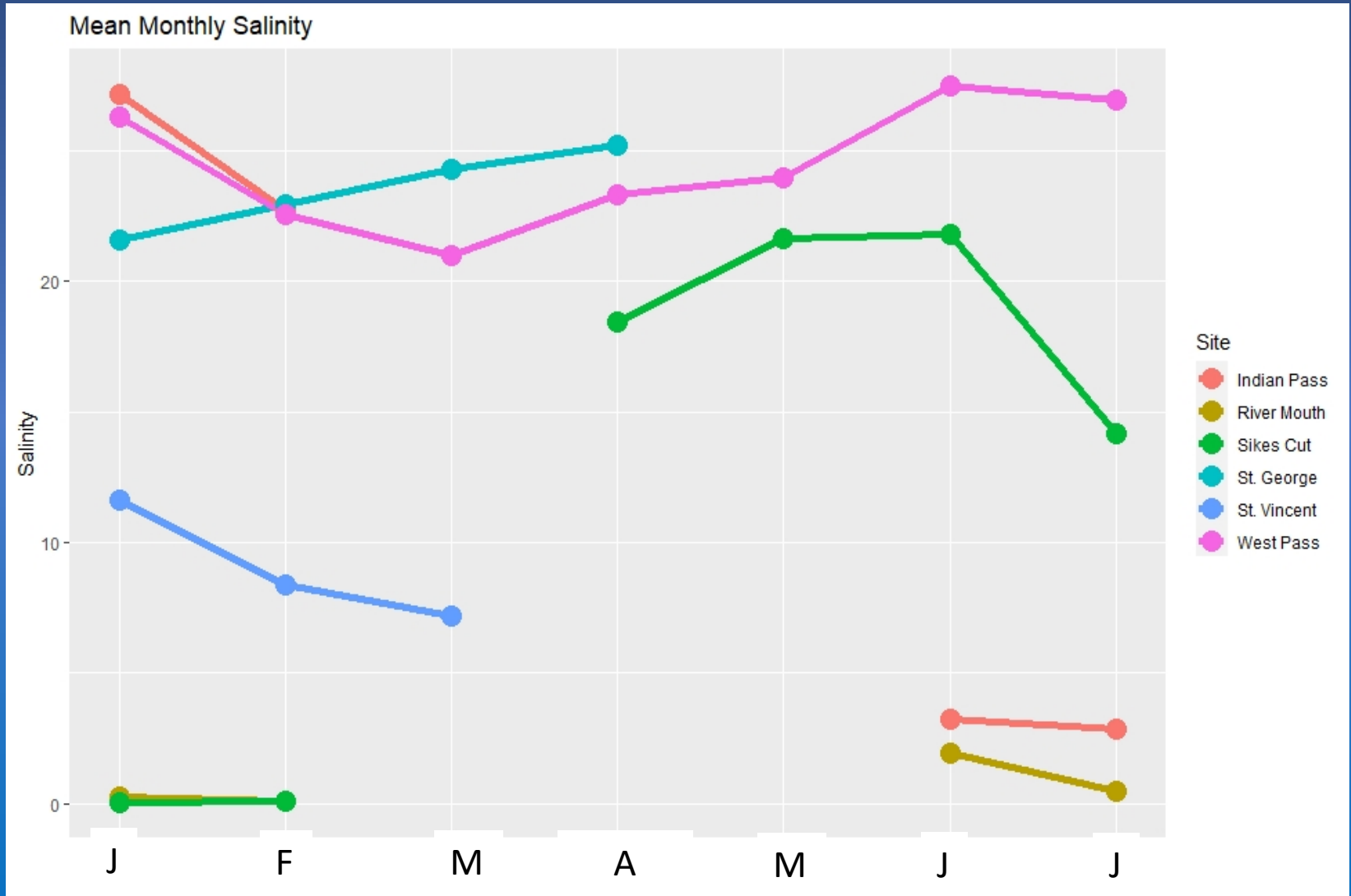
FWC cultching, 2021



Map of deployed YSI dataloggers



In situ environmental measurements



Inter-tidal oyster populations

Indian Lagoon, East Cove, Carabelle, Alligator Harbor

Five x 0.25 m² quadrats per site

Spring and Fall:

Monthly

Total weight and volume of sample

Number of live oysters and boxes

Shell length, width, height

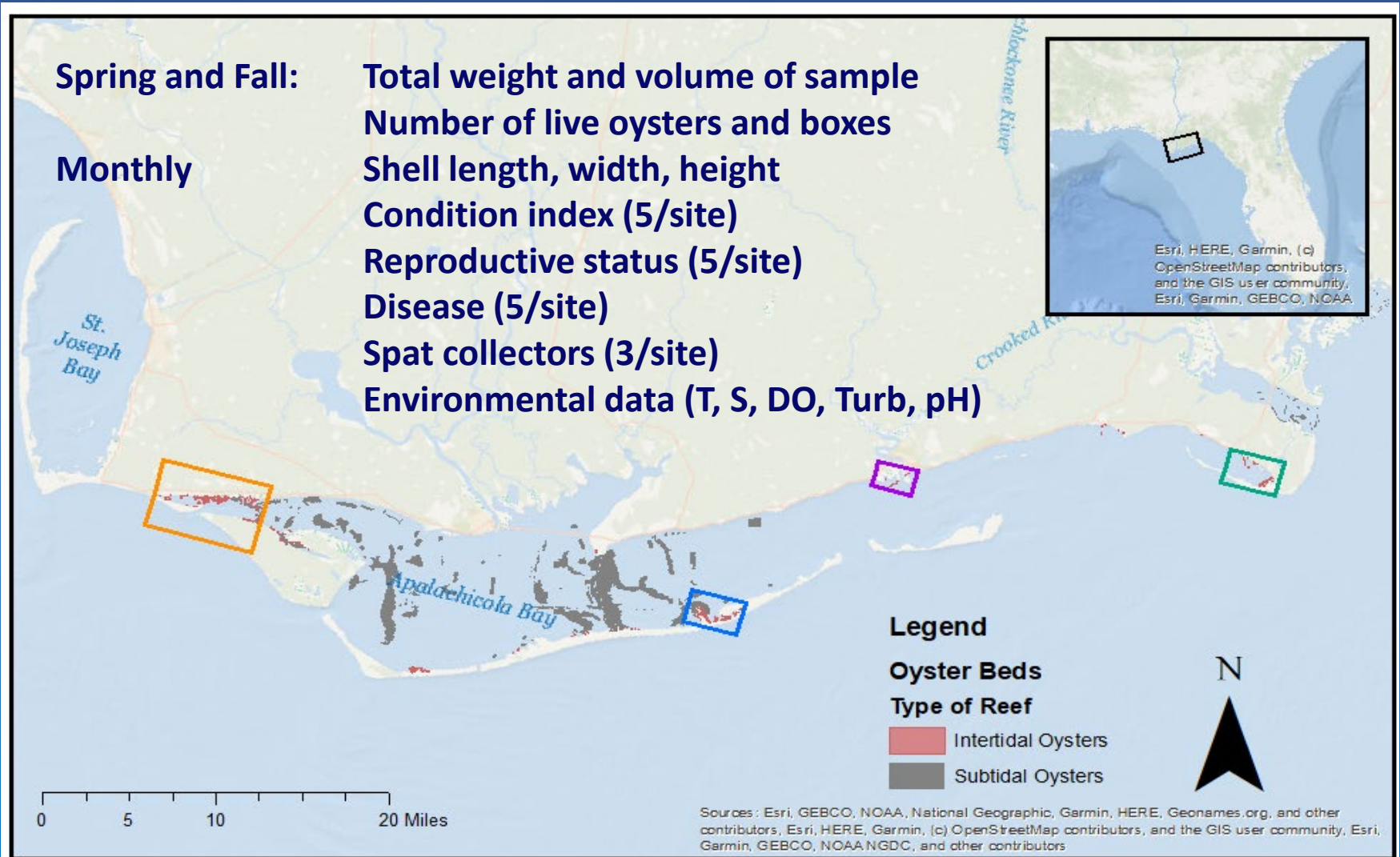
Condition index (5/site)

Reproductive status (5/site)

Disease (5/site)

Spat collectors (3/site)

Environmental data (T, S, DO, Turb, pH)



Esri, HERE, Garmin, (c) OpenStreetMap contributors, and the GIS user community, Esri, Garmin, GEBCO, NOAA

Legend

Oyster Beds

Type of Reef

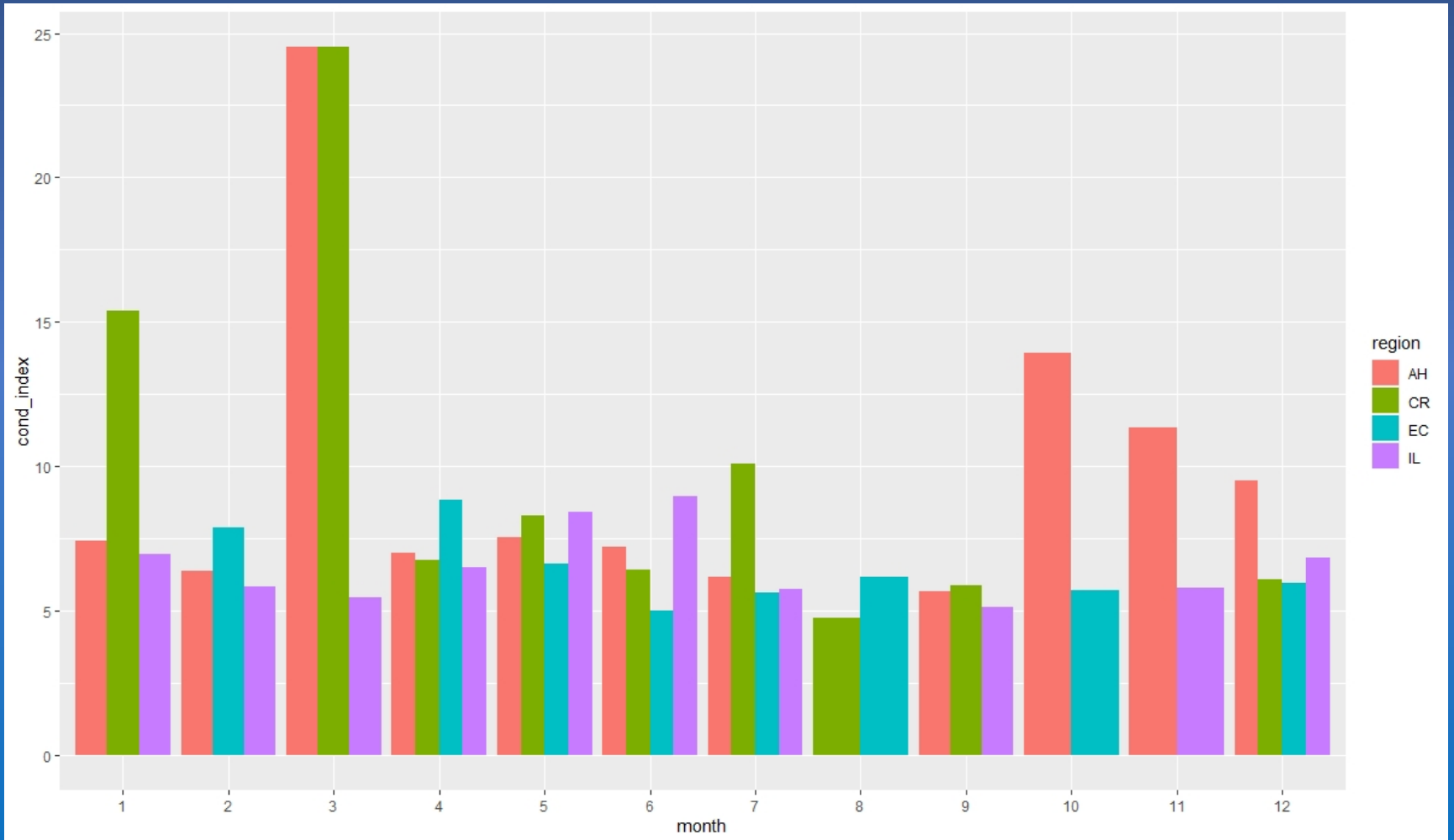
Intertidal Oysters

Subtidal Oysters

N

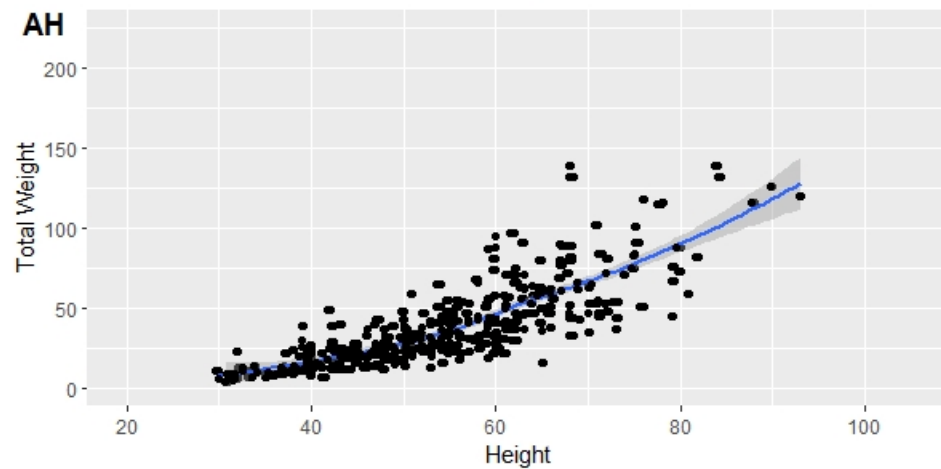
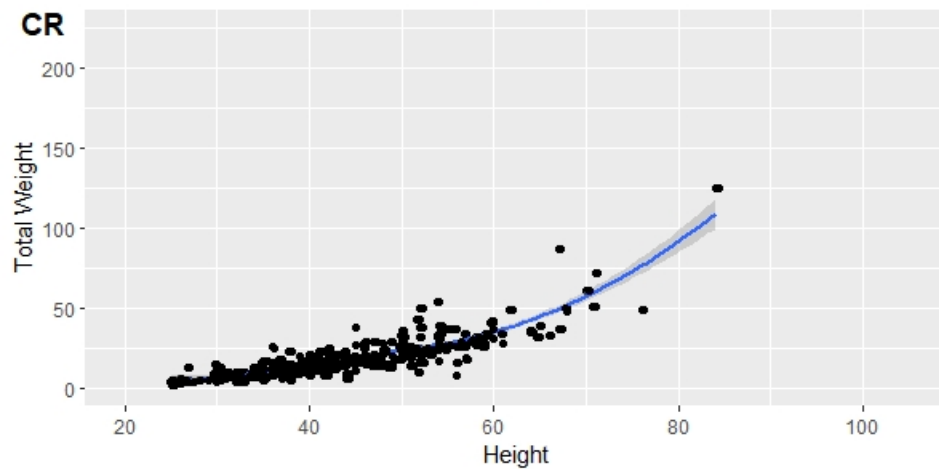
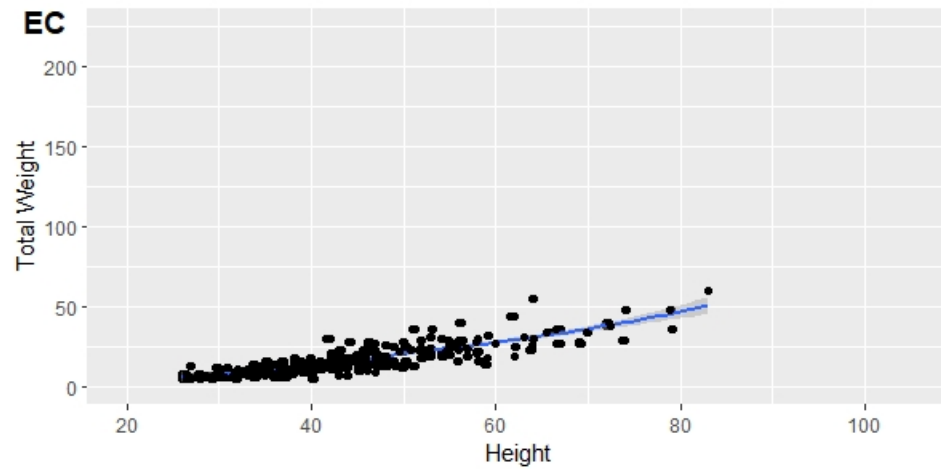
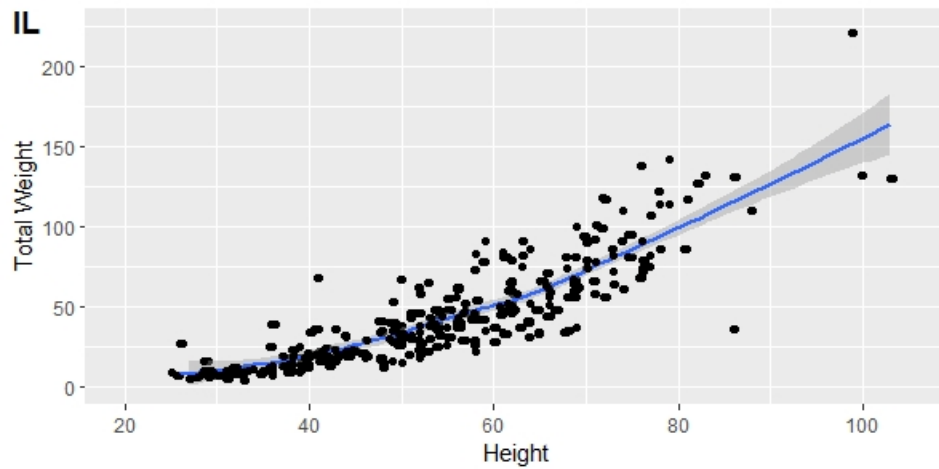
Sources: Esri, GEBCO, NOAA, National Geographic, Garmin, HERE, Geonames.org, and other contributors, Esri, HERE, Garmin, (c) OpenStreetMap contributors, and the GIS user community, Esri, Garmin, GEBCO, NOAA NGDC, and other contributors

Intertidal sampling Condition Index



Intertidal sampling

Height: Weight



A scenic sunset over a body of water. The sky is a mix of deep blue and orange, with large, dark clouds catching the low sun's light. The water is calm, reflecting the colors of the sky. In the distance, a long bridge spans across the water. In the foreground on the left, there are tall, green reeds. The overall mood is peaceful and contemplative.

Questions?