

Apalachicola Bay Oyster Restoration Phase II Update



Devin Resko
Fishery Disaster Relief Program Coordinator
Division of Marine Fisheries Management



Florida Fish and Wildlife Conservation Commission

Program Overview

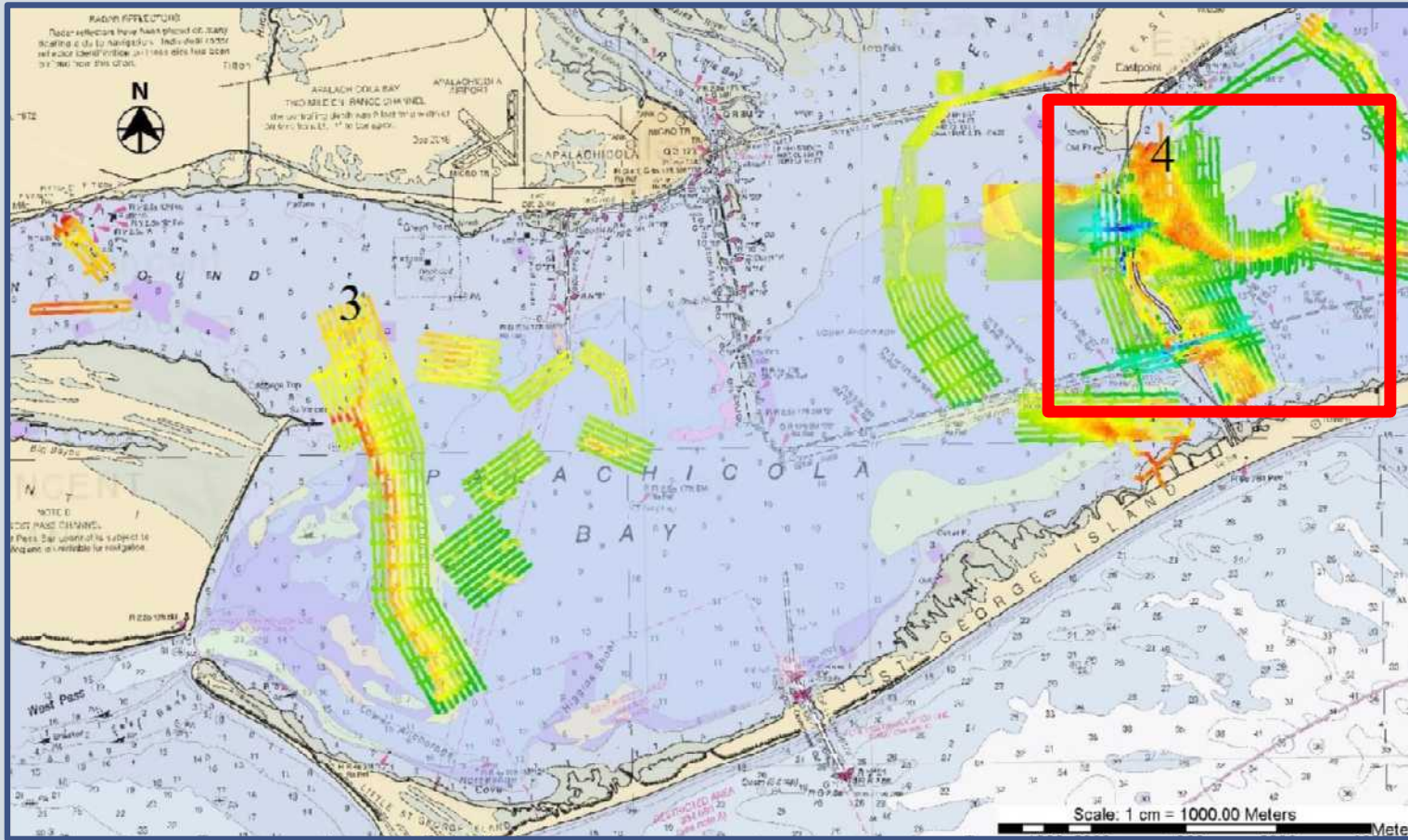
- \$20M agreement with National Fish and Wildlife Foundation (NFWF)
- Restoration activities in Apalachicola Bay
- Revised oyster management strategies for Apalachicola Bay & Suwannee Sound
- FWC will perform a restoration pilot study
- Utilizing pilot study, FWC will have more data to construct and perform larger restoration activity



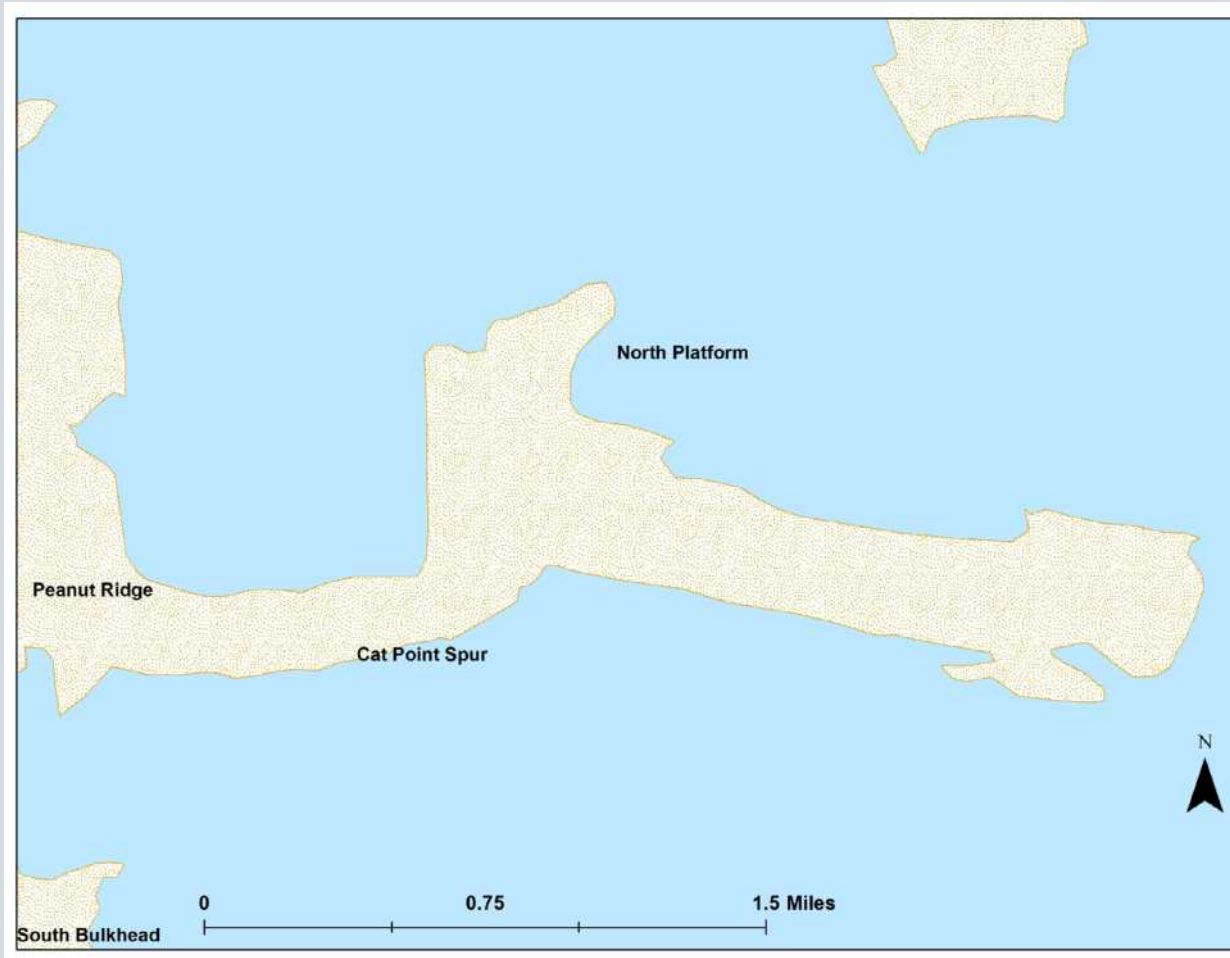
Apalachicola Bay Oyster Restoration – Pilot Study

- FWC submitted pilot study “*one pager*” scope of work to NFWF in early December '22
- Met with NFWF in late December, requested additional information, revised submission deadline:
 - Mid-January: Preliminary restoration plan, monitoring/sampling methods, budget for NFWF review **COMPLETED**
 - Mid-February: FWC addressed comments from NFWF, final documents for NFWF committee review and approval **COMPLETED**
- Early March: NFWF committee approved pilot study

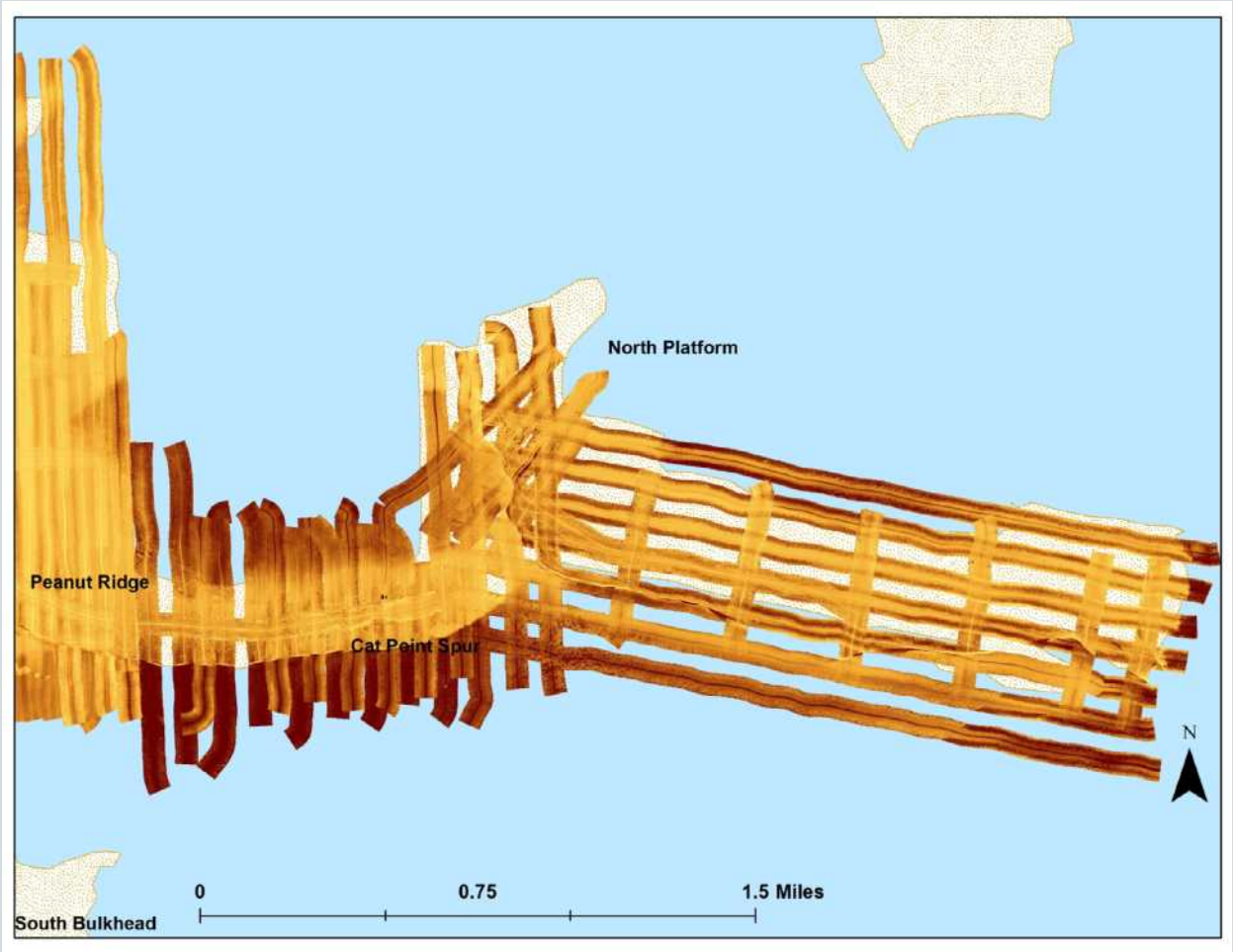


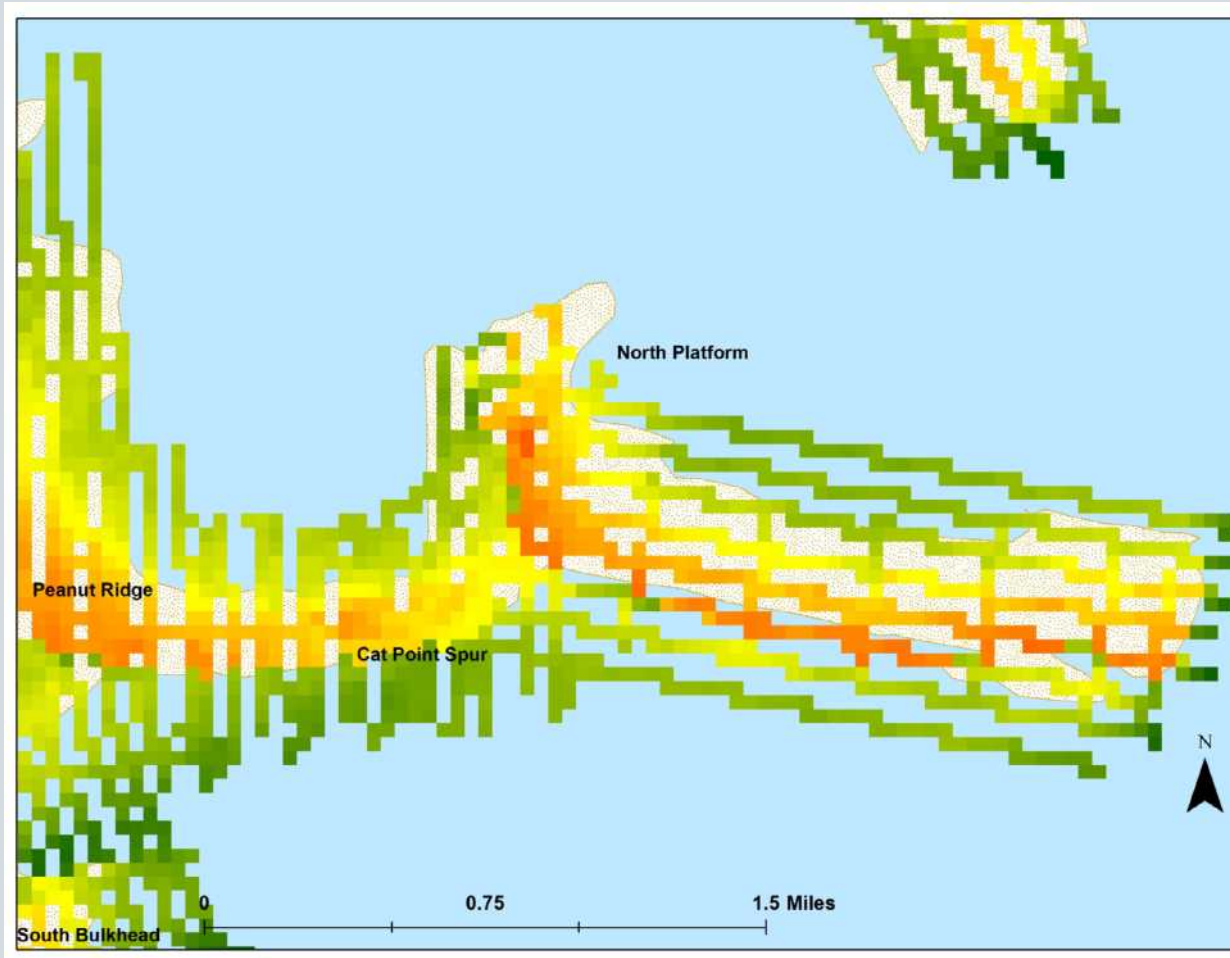


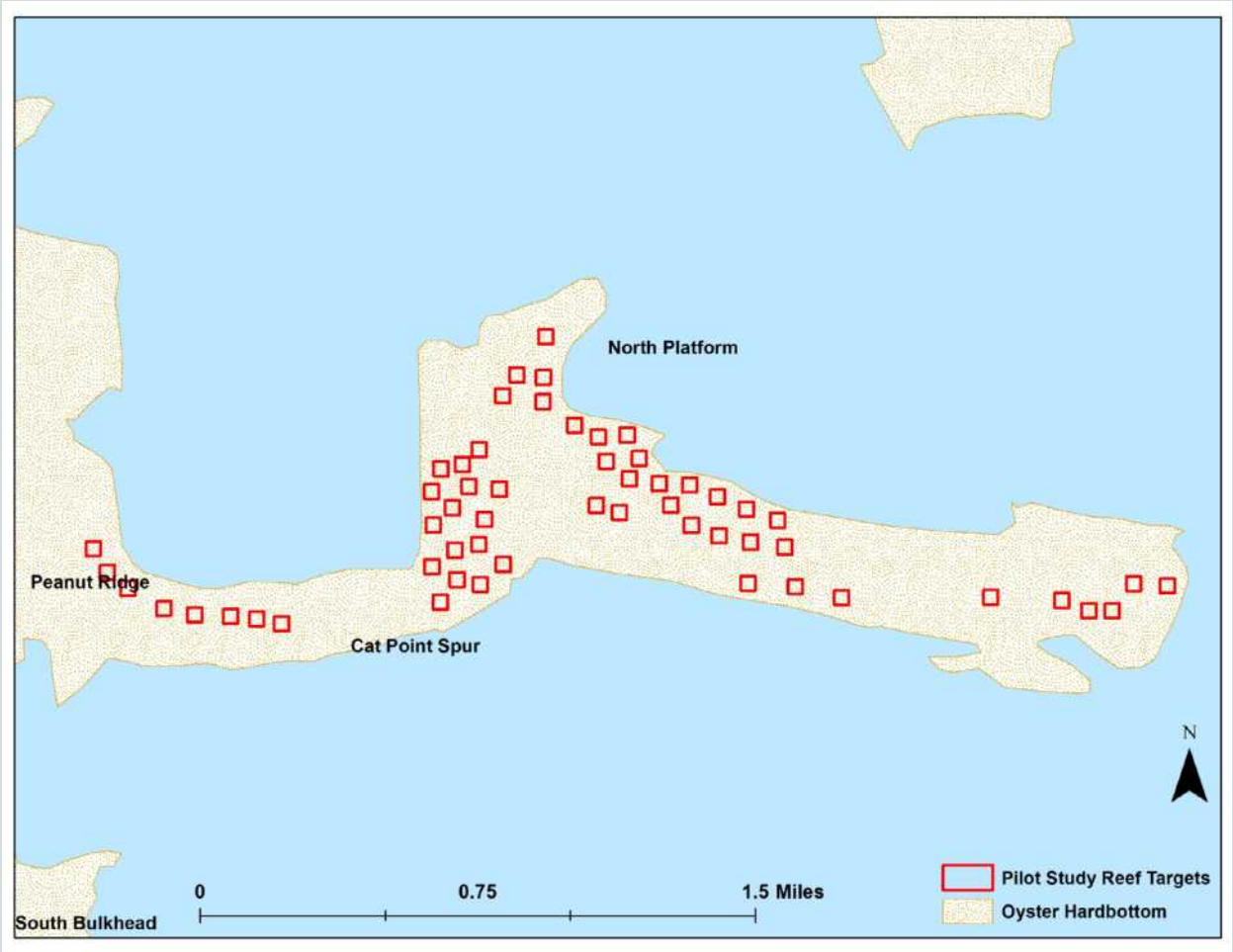










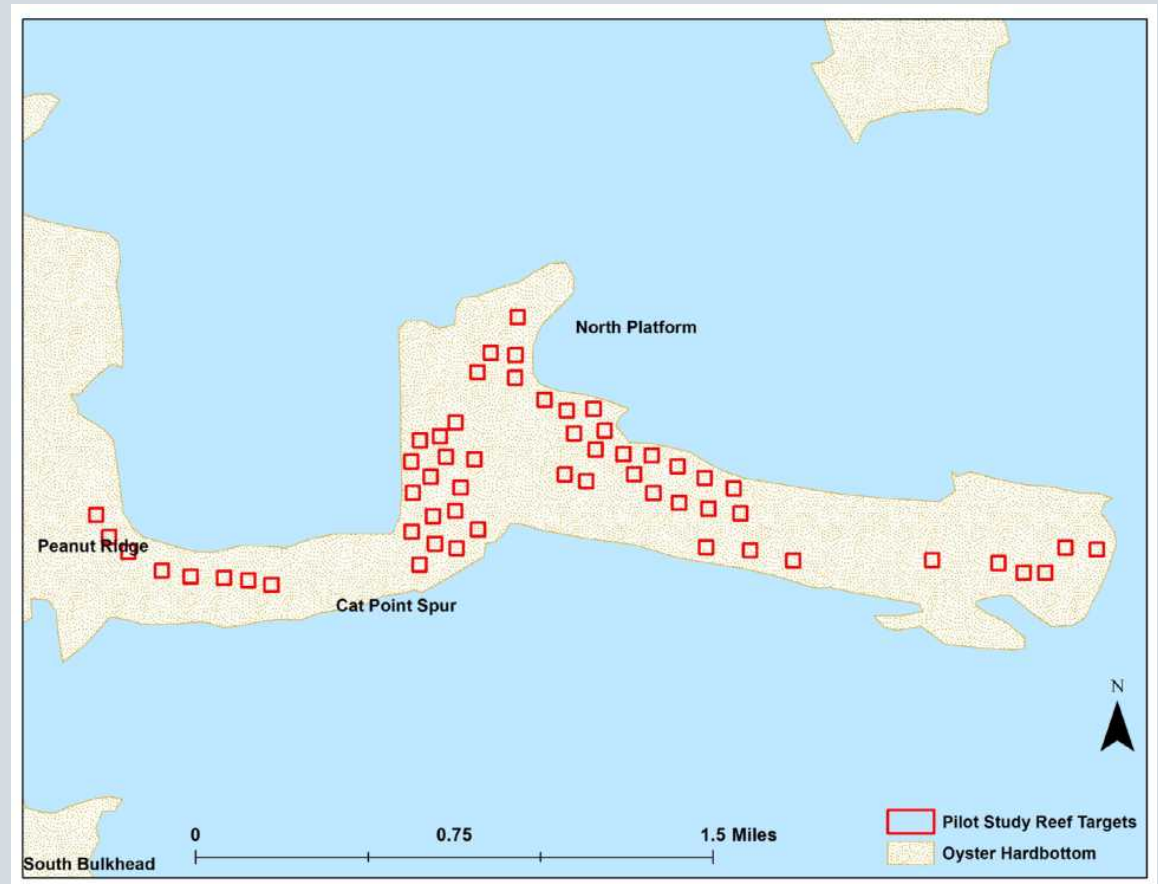






Reef Characteristics

1. Hardbottom
2. Good waterflow
3. Nearby oysters
4. Not a navigational hazard
5. Navigable for contractor



Apalachicola Bay Oyster Restoration – Pilot Study

- Pilot study will test multiple treatments
 1. Reef height 1 ft (low) and 2 ft (high)
 2. Material size 6” (small) & 12” (large) FL dolostone
 3. **Depth**

- FSU ABSI’s complimentary study
 - Increases scientific scope of work done in Apalachicola Bay
 - Provides more data to assist in future, larger restoration activities



Next Steps

- Finish refinement of competitive solicitation for contractor
 - Currently with our Purchasing Division for review
- Goal is to have contractor, material in water Summer/Fall 2023
 - Dependent on quality of bids received
- Hire part-time site monitor for restoration activities
- Work with FWC researchers, university researchers to prepare monitoring and surveying methods



Questions?

