

Apalachicola Bay Oyster Restoration Phase II Update



Devin Resko

Fishery Disaster Relief Program Coordinator
Division of Marine Fisheries Management



Florida Fish and Wildlife Conservation Commission

Program Overview

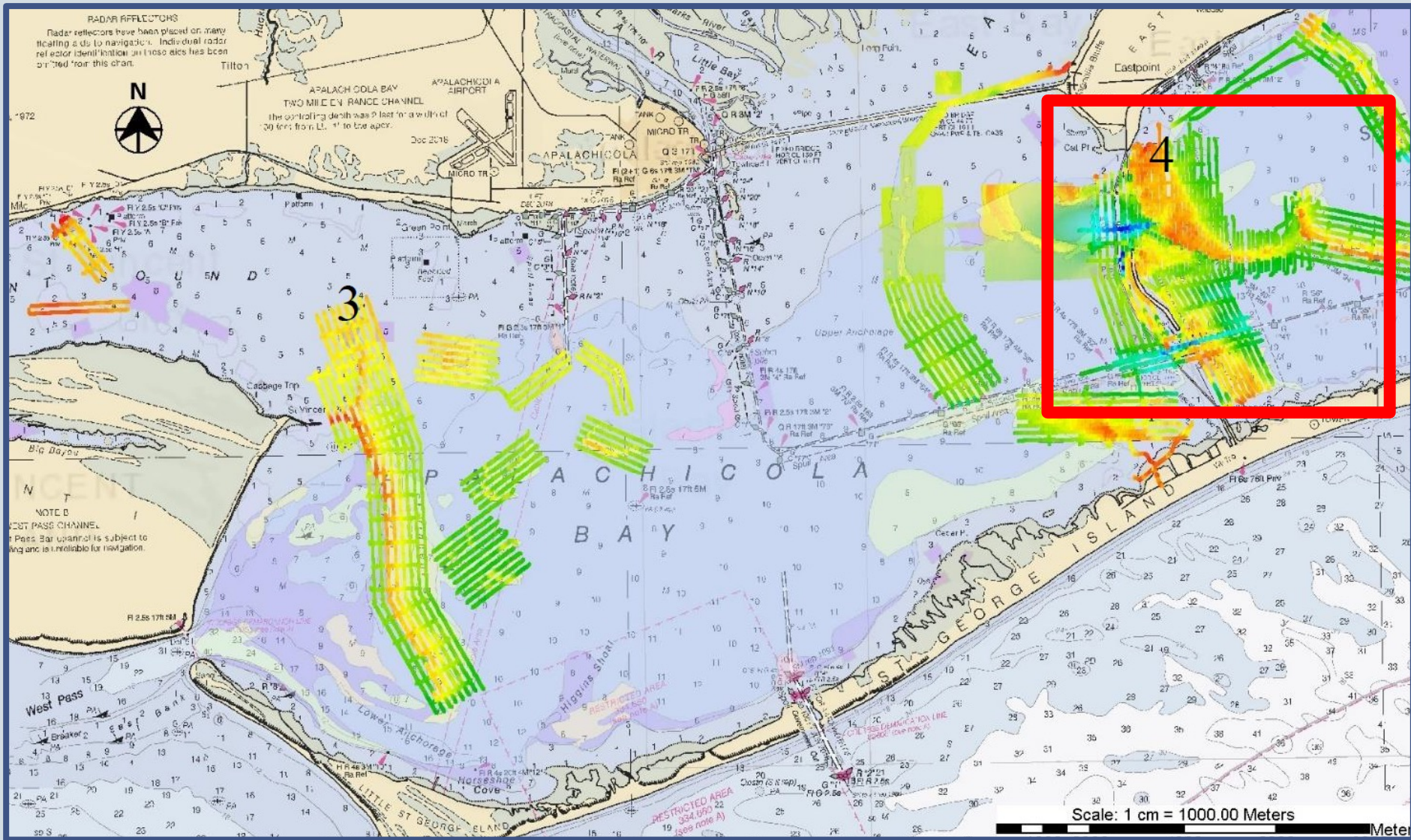
- \$20M agreement with National Fish and Wildlife Foundation (NFWF)
- Restoration activities in Apalachicola Bay
- Revised oyster management strategies for Apalachicola Bay & Suwannee Sound
- FWC will perform a restoration pilot study
- Utilizing pilot study, FWC will have more data to construct and perform larger restoration activity

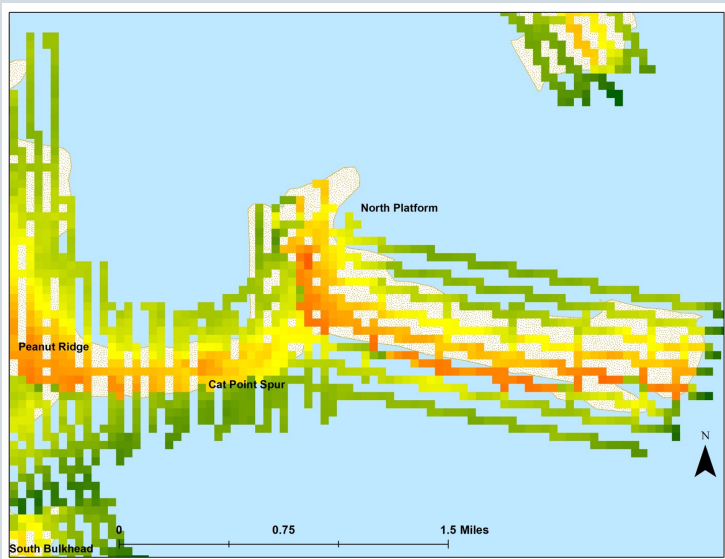
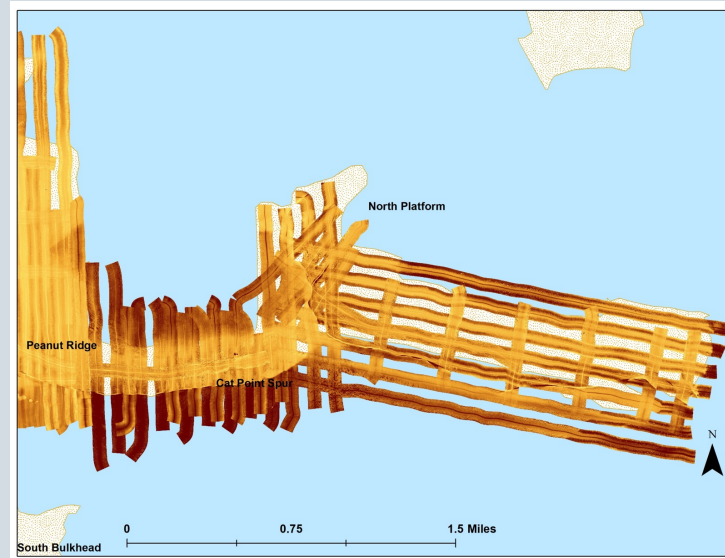


Restoration Pilot Study

- Originally budgeted at \$7 million utilizing NFWF funding
- Budget has increased with additional funding allocated from Governor DeSantis' Framework for Freedom
- Additional \$10 million for Apalachicola Bay oyster reef restoration
- Allows FWC to perform a more robust pilot study, ensuring scientific merit and meaningful restoration
 - Dependent on quality of bids received
- Dependent on the quality of received bids for the pilot study, these additional funds could be utilized towards expansion of the pilot if deemed appropriate

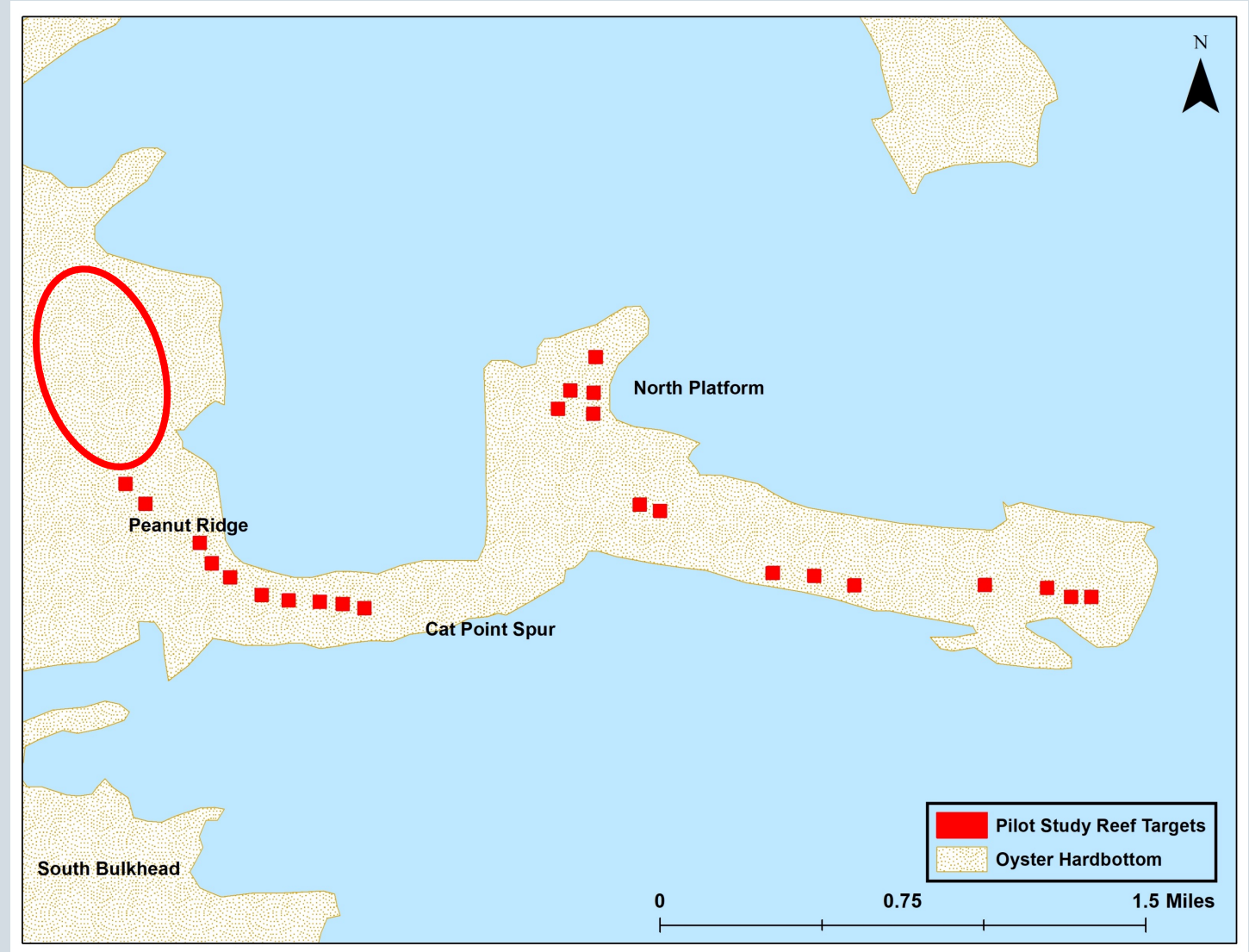






Reef Characteristics

1. Hardbottom
2. Good waterflow
3. Nearby oysters
4. Not a navigational hazard
5. Navigable for contractor



Apalachicola Bay Oyster Restoration – Pilot Study

- Pilot study will test multiple treatments
 1. Reef height 1 ft (low) and 2 ft (high)
 2. Material size 6” (small) & 12” (large) FL dolostone
- FSU ABSI’s complimentary study
 - Increases scientific scope of work done in Apalachicola Bay
 - Provides more data to assist in future, larger restoration activities



Next Steps

- Advertisement of competitive solicitation for contractor
 - Currently with Legal for final review
- Goal is to have contractor, material in water Summer/Fall 2023
 - Dependent on quality of bids received
- Hire part-time site monitor for restoration activities
- Work with FWC researchers, university researchers to prepare monitoring and surveying methods



Questions?

