



Baysavers Group

Helping to restore, protect and preserve Apalachicola, St Joseph and St Andrew Bay Ecosystems

PURPOSE OF MEETING

To provide background on BAYSAVERS initiatives to manage flow in the GIWW to help restore Apalachicola, St. Joseph and St. Andrew Bay ecosystems.

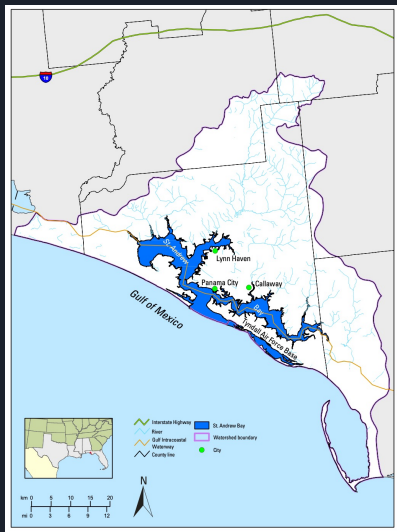


BAYSVAERS PERSPECTIVE

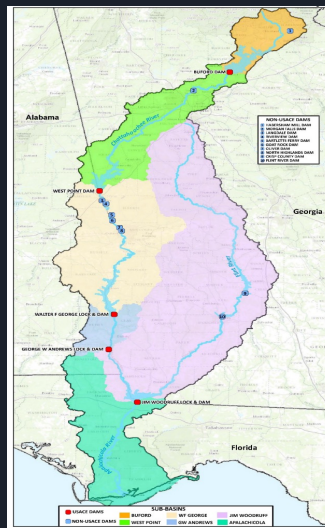
Managing flow in the Gulf Intracoastal Waterway (GIWW) is a significant and achievable opportunity to improve water quality in our bays.



WATER FLOW PATTERNS BEFORE CONSTRUCTION OF THE GIWW AND GCC



USGS Natural Watershed Boundary



USACE Natural Watershed Boundary



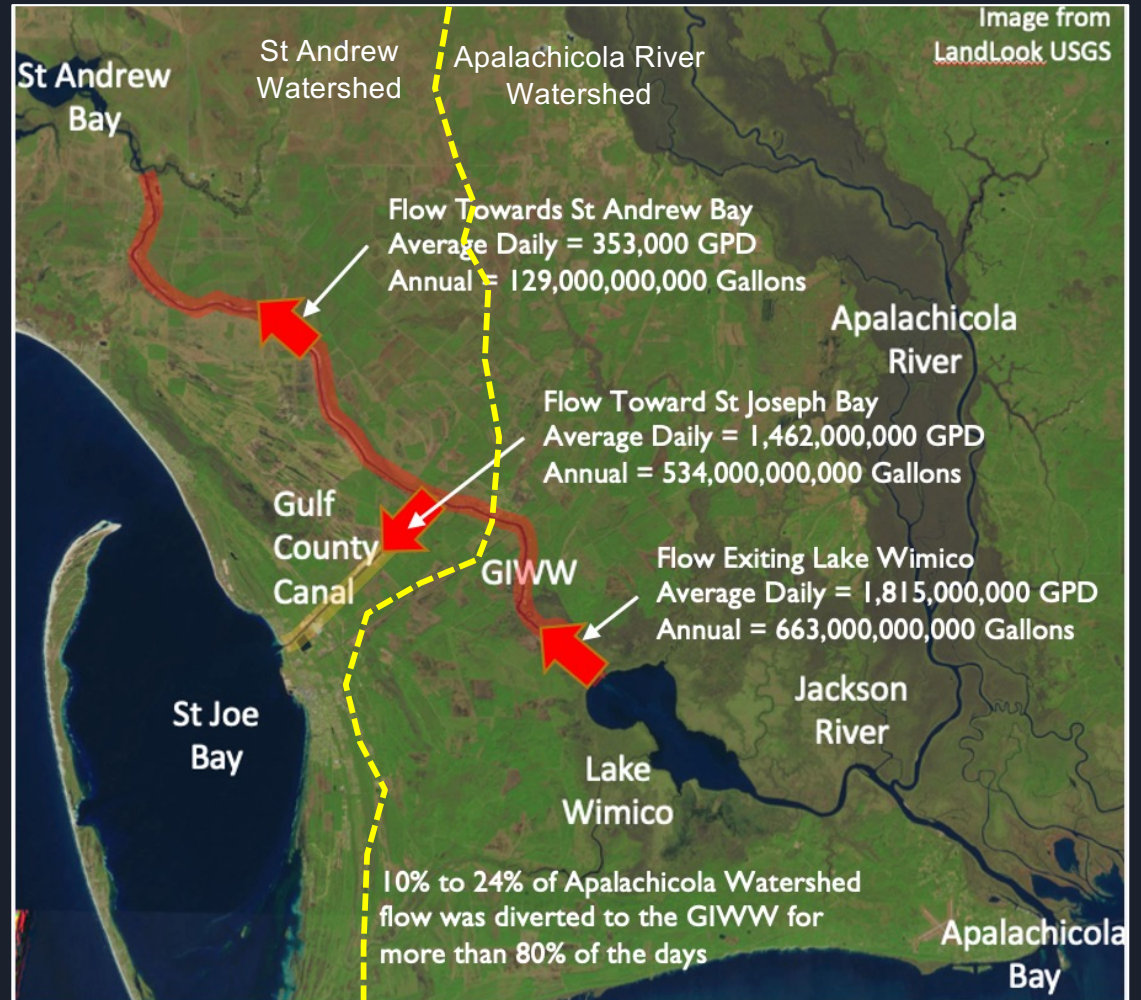
THE GIWW DIVERTS FLOW AWAY FROM APALACHICOLA BAY

Until 2020 the magnitude
of the diversion was
unknown.



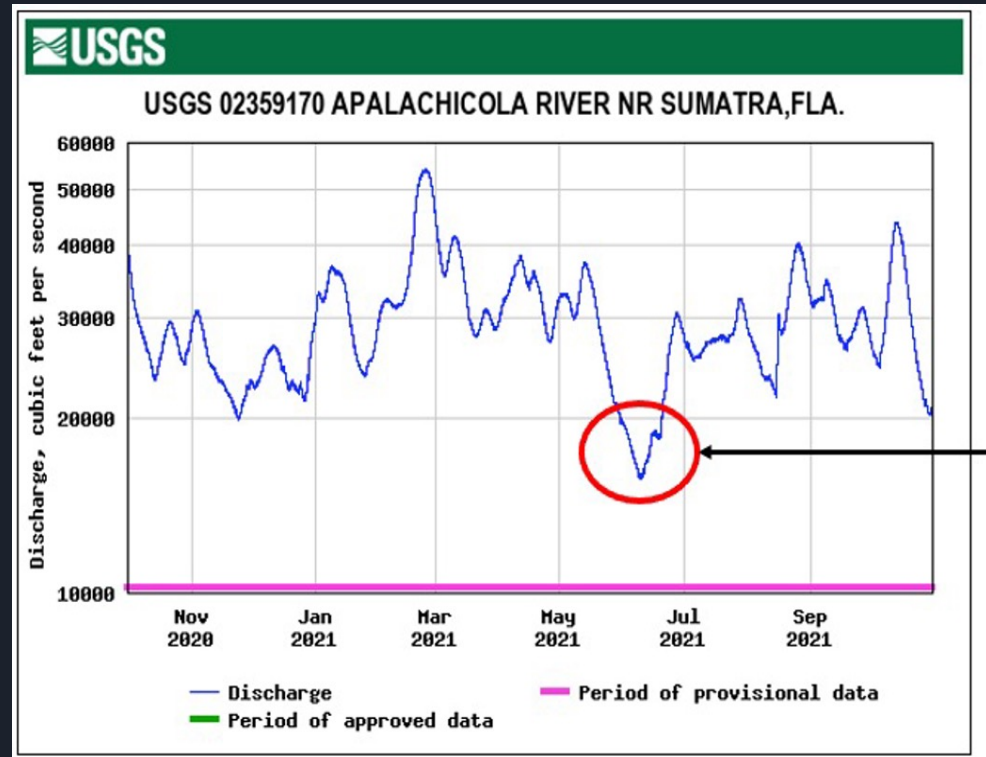
USGS MEASURED GIWW FLOWS

More than ten percent of the Apalachicola Watershed average flow was diverted to the St Andrew Watershed in 2022.



USGS MEASURED LOW FLOW PERIOD

About 10% percent of the Apalachicola Watershed flow was diverted to the GIWW during the 2021 low flow period.



Sumatra Gauge
6/10/21 =
15,900 cfs

USGS East
of GCC
6/10/21 =
1,472 cfs

ECOSYSTEM RESTORATION WITH FLOW CONTROL

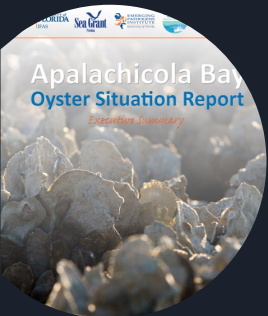
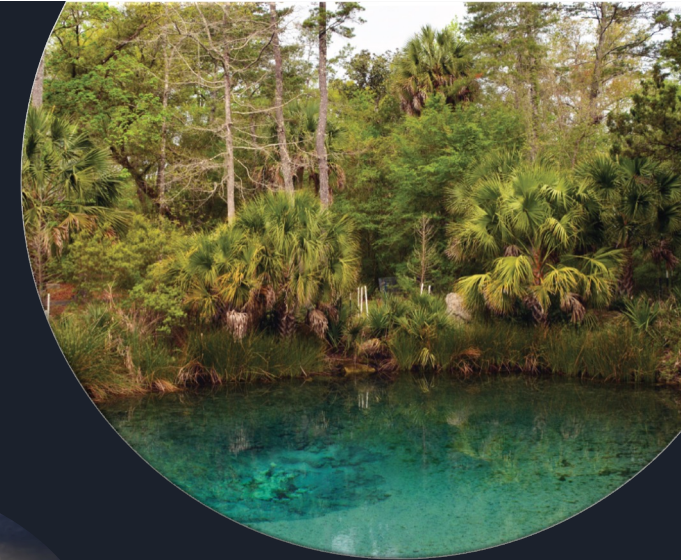
A primary mission of the USACE is to restore aquatic ecosystems.



USACE WRRDA 7001 STUDY PROCESS

- Cost is capped at \$3M.
- Cost is split between the Federal Government and a Non-Federal Sponsor.
- Study will take 3 years to complete.
- BAYSAVERS and/or the NFWFMD will be the Non-Federal Sponsors.
- BAYSAVERS submitted the 7001 application in 2021.
- The study will likely commence in 2025.

MANAGING FLOW DIVERSION IN THE GIWW SHOULD BE CONSIDERED IN APALACHICOLA BAY STUDIES



ENVIRONMENTAL ASSESSMENT
Potential Placement Areas for Maintenance Dredging
of Lake Wimico
Gulf Intracoastal Waterway, Gulf County, Florida
A FEDERALLY AUTHORIZED PROJECT

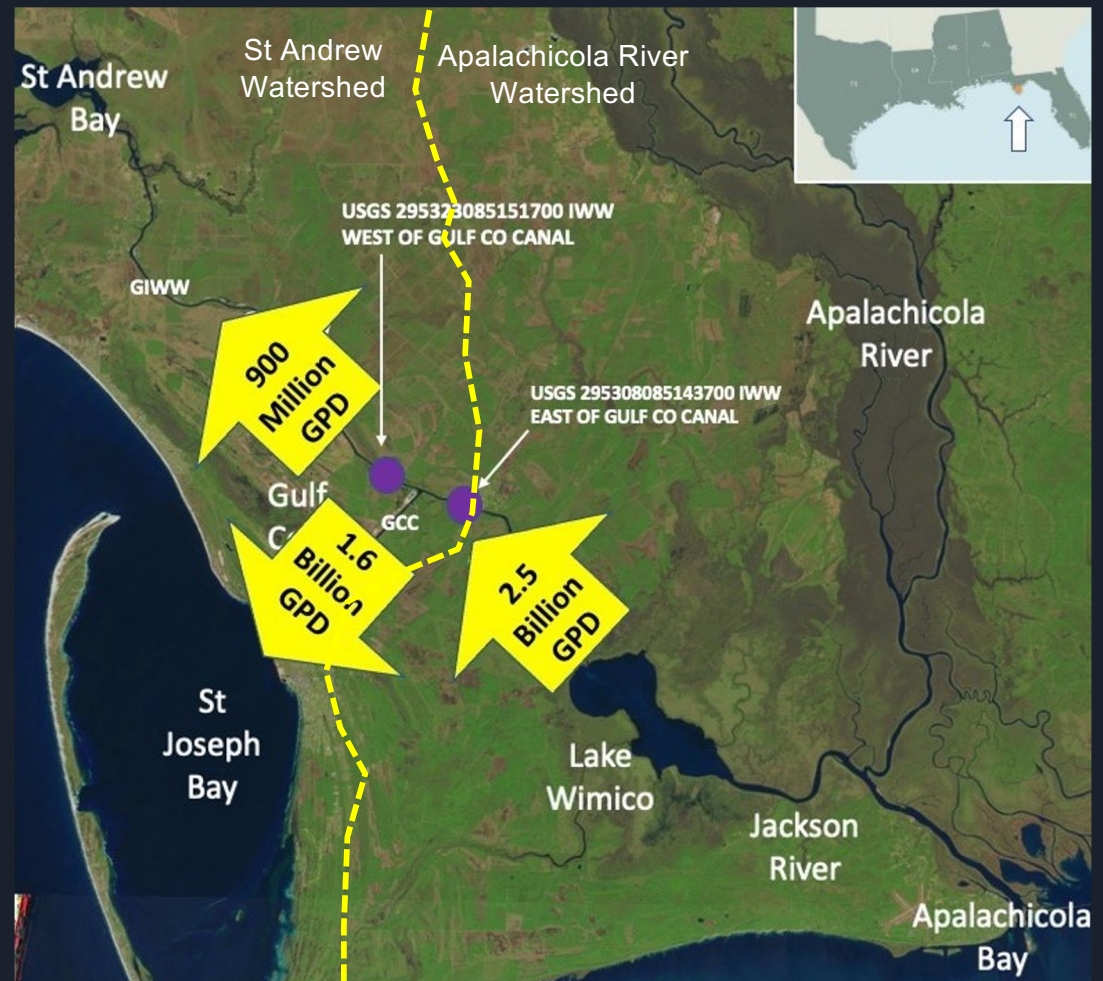
A map showing the potential placement areas for maintenance dredging of Lake Wimico. The map includes a legend with 'LIMITS' and 'DREDGING' areas, and a small inset map showing the location of Lake Wimico in the Gulf of Mexico region.

St. Joseph Bay
Aquatic Preserve

Management Plan • September, 2008 - August, 2018

SUMMARY

1. Flow data in the GIWW is now available.
2. The WRRDA 7001 study is teed-up.
3. Managing flow in the GIWW to restore our bays ecosystems is achievable.
4. The USACE is uniquely qualified to study ecosystem impacts with input from all stakeholders.



HOW ABSI CAN HELP

1. Assess potential to improve the Apalachicola Bay ecosystem by managing flow in GIWW.
2. Help us raise awareness on the potential to improve our bays ecosystems by managing flow in the GIWW.
3. Participate in the upcoming stakeholders meeting facilitated by FDEP and NFWFMD to develop the scope for the WRRDA 7001 study.
4. Issue a letter of support for the WRRDA 7001 study.